



Segers is a Swedish company founded in 1943 and today, three generations later, the Segers family has grown with several of its own facilities around the world. For us, it has always been an important issue that our employees should have the same rights no matter where in the world they work. Being an employee at Segers means that you work in a humane and safe environment where you feel seen and heard. You are part of a company that takes development and sustainability very seriously. When you buy garments from Segers, you buy quality, functionality, safety and durability in Scandinavian design.

We are certified with Amfori / BSCI and ISO 9001. You are always welcome to contact us if you want to pay a visit to our facilities.





CHEF SHIRTS LONG SLEEVE



Vit - 000 Svart - 015

ART NO 1005201

Chef's jacket, Men's

Concealed snap buttons.
Double pen pocket on the left sleeve, raglan cut. Longitudinal seams front/back. Hanging loop in collar.

MATERIAL

65/35% polyester/cotton - Twill
- 210g/m2

WASH



SIZES

C44 / C46 / C48 / C50 / C52 / C54 /
C56 / C58 / C60 / C62 / C64 /



Marin - 002 Ljusgrå - 011 Grå - 014 Roströd - 038 Röd - 041 Olivgrön - 086

ART NO 1014201

Chef's shirt, Women's

Slim fit. Concealed snap buttons. Yoke front. Longitudinal seams front/back. Double pen pocket left sleeve. Hanging loop in collar.

MATERIAL

65/35% polyester/cotton - Twill
- 210g/m2

WASH



SIZES

C34 / C36 / C38 / C40 / C42 / C44 /
C46 / C48 / C50 / C52 / C54 /



Marin - 002 Ljusgrå - 011 Grå - 014 Roströd - 038 Röd - 041 Olivgrön - 086

ART NO 1019201

Chef's shirt, Men's

Slim fit. Concealed snap buttons. Yoke front. Longitudinal seams front/back. Double pen pocket left sleeve. Hanging loop in collar.

MATERIAL

65/35% polyester/cotton - Twill
- 210g/m2

WASH



SIZES

C40 / C42 / C44 / C46 / C48 / C50 /
C52 / C54 / C56 / C58 / C60 / C62 /
C64 /





Vit - 000

ART NO 1026261

chef's shirt, women's

Slim fit. Concealed snap buttons. One button visible at collar, remove before washing. Breast pocket. Sleeves with cuffs, slits with snap buttons. Yoke, longitudinal seams front /back. Rounded hem, long at the back. Loop on outside of collar for apron ties. Hanging loop in collar. Piping in collar, yoke, sleeve.

MATERIAL

50/50% TENCEL™ lyocell /polyester - Twill - 195g/m2

WASH



SIZES

C34 / C36 / C38 / C40 / C42 / C44 / C46 / C48 / C50 /



Vit - 000

ART NO 1027261

Chef's shirt, Men's

Slim fit. Concealed snap buttons. One button visible at collar, remove before washing. Breast pocket. Long sleeves with cuffs, snap button, slits. Yoke, longitudinal seams front /back. Rounded hem, long at the back. Loop on outside of collar for apron ties. Hanging loop in collar. Piping in collar, yoke, sleeve.

MATERIAL

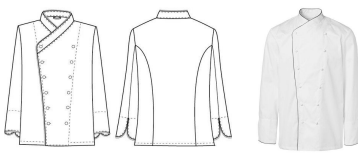
50/50% TENCEL™ lyocell /polyester - Twill - 195g/m2

WASH



SIZES

C44 / C46 / C48 / C50 / C52 / C54 / C56 / C58 / C60 /



Svart/vit - 915

ART NO 1030650

Chef's jacket Men's

French cut. Tapered closure. Piping around the collar, front edge, cuffs. Hand-sewn, fabric buttons that can withstand mangling. Seams at the back. Hanging loop in collar.

MATERIAL

100% cotton - Batavia - 190g /m2

WASH



SIZES

C40 / C44 / C46 / C48 / C50 / C52 / C54 / C56 / C58 / C60 / C62 / C64 /





Vit - 000

ART NO 1031257

Chef's jacket child

Classic model with white removable stud buttons, to be removed before washing. Long fold-up sleeves. Hanging loop in collar. NOT recommended for children under 3 years of age due to loose buttons.

MATERIAL

50/50% cotton/polyester - Plain, domestik - 180g/m2

WASH



SIZES

CTL 100 / CTL 110 / CTL 120 / CTL 130 / CTL 140 / CTL 150 /



Svart/vit - 915

ART NO 1032650

Chef's jacket, Women's

Piping around the collar, front edge, cuffs. Hand-sewn, fabric buttons that can withstand mangling. Hanging loop in collar.

MATERIAL

100% cotton - Batavia - 190g /m2

WASH



SIZES

C34 / C36 / C38 / C40 / C42 / C44 / C46 / C48 / C50 /



Vit - 000

ART NO 1047650

Chef's shirt, Men's

Slim fit. Long sleeves with cuffs, snap button, slits. Concealed snap buttons. One button visible at collar, remove before washing. Breast pocket. White piping on yoke front/back, on sleeves. Slits in the sides. Longitudinal seams front/back. White double stitching. Hanging loop in collar.

MATERIAL

100% cotton - Batavia - 190g /m2

WASH



SIZES

C44 / C46 / C48 / C50 / C52 / C54 / C56 / C58 / C60 / C62 /





Vit - 000

ART NO 1048650

Chef's shirt, Women's

Slim fit. Long sleeves with cuffs, snap button, slits. Concealed snap buttons. One button visible at collar, remove before washing. Breast pocket. White piping on yoke front/back, on sleeves. Slits in the sides. Longitudinal seams front/back. White double stitching. Hanging loop in collar.

MATERIAL

100% cotton - Batavia - 190g /m2

SIZES

C34 / C36 / C38 / C40 / C42 / C44 / C46 / C48 / C50 /

WASH



Vit - 000 Svart - 015

ART NO 1057201

Chef's shirt, Men's

Slim fit. Concealed snap buttons. Yoke, longitudinal seams front/back. Hanging loop in collar.

MATERIAL

65/35% polyester/cotton - Twill - 210g/m2

SIZES

C42 / C44 / C46 / C48 / C50 / C52 / C54 / C56 / C58 / C60 / C62 / C64 / C66 / C68 /

WASH



Vit - 000 Svart - 015

ART NO 1058201

Chef's shirt, Women's

Slim fit. Concealed snap buttons. Yoke, longitudinal seams front/back. Hanging loop in collar.

MATERIAL

65/35% polyester/cotton - Twill - 210g/m2

SIZES

C34 / C36 / C38 / C40 / C42 / C44 / C46 / C48 / C50 / C52 /

WASH





Jeans - 076

ART NO 1073628

Chef's jacket, Men's

Classic straight cut with seams at the back. Concealed snap buttons. Loop outside back of collar for apron ties. Hanging loop in collar.

MATERIAL

100% cotton - Denim - 220g /m2, (7,5 oz)

SIZES

C44 / C46 / C48 / C50 / C52 / C54 / C56 / C58 / C60 / C62 / C64 /

WASH



Garment washed



Ljusgrå - 011

ART NO 1091245

Shirt Men's

Slim fit. Fabric-covered buttons. Long sleeves with cuffs, buttons, slits. Breast pocket. Yoke, longitudinal seams front /back. Rounded hem. Slits in the sides. Loop on outside of collar for apron ties. Hanging loop in collar.

MATERIAL

50/50% TENCEL™ lyocell /polyester - Twill - 215g/m2

SIZES

C44 / C46 / C48 / C50 / C52 / C54 / C56 / C58 / C60 /

WASH



Vit - 000 Svart - 015

ART NO 1091261

Shirt Men's

Slim fit. Fabric-covered buttons. Long sleeves with cuffs, buttons, slits. Breast pocket. Yoke, longitudinal seams front /back. Rounded hem. Slits in the sides. Loop on outside of collar for apron ties. Hanging loop in collar.

MATERIAL

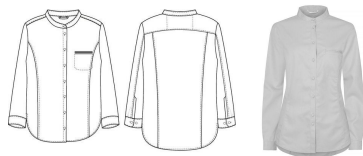
50/50% TENCEL™ lyocell /polyester - Twill - 195g/m2

SIZES

C44 / C46 / C48 / C50 / C52 / C54 / C56 / C58 / C60 / C62 /

WASH





Ljusgrå - 011

ART NO 1094245

Shirt, Women's

Slim fit. Fabric-covered buttons.
Long sleeves with cuffs,
buttons, slits. Breast pocket.
Yoke, longitudinal seams front
/back. Rounded hem. Slits in
the sides. Loop on outside of
collar for apron ties. Hanging
loop in collar.

MATERIAL

50/50% TENCEL™ lyocell
/polyester - Twill - 215g/m2

WASH



SIZES

C34 / C36 / C38 / C40 / C42 / C44 /
C46 / C48 / C50 /



Vit - 000

Svart - 015

ART NO 1094261

Shirt, Women's

Slim fit. Fabric-covered buttons.
Long sleeves with cuffs,
buttons, slits. Breast pocket.
Yoke, longitudinal seams front
/back. Rounded hem. Slits in
the sides. Loop on outside of
collar for apron ties. Hanging
loop in collar.

MATERIAL

50/50% TENCEL™ lyocell
/polyester - Twill - 195g/m2

WASH



SIZES

C34 / C36 / C38 / C40 / C42 / C44 /
C46 / C48 / C50 / C52 /



Vit - 000

ART NO 1330651

Chef's jacket, Men's

Classic straight cut. Removable
white stud buttons included.
Seams at the back. Hanging
loop in collar

MATERIAL

100% cotton - Satin - 240g/m2

WASH



SIZES

C44 / C46 / C48 / C50 / C52 / C54 /
C56 / C58 / C60 / 62/64 / 66/68 /



Vit - 000

ART NO 1335651

Chef's Jacket, Women's

Classic cut, with bust darts, slightly waisted. Removable white stud buttons included. Seams at the back. Hanging loop in collar.

MATERIAL

100% cotton - Satin - 240g/m2

WASH



SIZES

C32 / C34 / C36 / C38 / C40 / C42 / C44 / C46 / C48 / C50 / C54 /



Vit - 000 Svart - 015

ART NO 1603201

Chef's jacket, Men's

Straight cut with seams at the back. Removable stud buttons included. White has white, black has black. Hanging loop in collar. Sizes C146-154 have about 5 cm longer sleeves and torso.

MATERIAL

65/35% polyester/cotton - Twill - 210g/m2

WASH



SIZES

C40 / C42 / C44 / C46 / C48 / C50 / C52 / C54 / C56 / C58 / C60 / C62 / C64 / C66 / C68 / C146 / C148 / C150 / C152 / C154 /



Vit - 000 Svart - 015

ART NO 1604201

Chef's jacket, Women's

Classic cut, with bust darts, slightly waisted. Concealed snap buttons. Seams at the back. Hanging loop in collar.

MATERIAL

65/35% polyester/cotton - Twill - 210g/m2

WASH



SIZES

C34 / C36 / C38 / C40 / C42 / C44 / C46 / C48 / C50 / C52 / C54 / C56 / C58





Vit - 000 Svart - 015

ART NO 1607201

Chef's jacket, Men's

Straight cut with seams at the back. Concealed snap buttons. Hanging loop in collar.

MATERIAL

65/35% polyester/cotton - Twill
- 210g/m2

WASH



SIZES

C42 / C44 / C46 / C48 / C50 / C52 /
C54 / C56 / C58 / C60 / C62 / C64 /
C66 / C68 / C70 / C142 / C144 / C146
/ C148 / C154 / C156 / C158 /



Vit - 000 Svart - 015

ART NO 1608201

Chef's jacket, Women's

Classic cut, with bust darts, slightly waisted. Removable stud buttons included. White has white, black has black. Seams at the back. Hanging loop in collar

MATERIAL

65/35% polyester/cotton - Twill
- 210g/m2

WASH



SIZES

C32 / C34 / C36 / C38 / C40 / C42 /
C44 / C46 / C48 / C50 / C52 / C54 /
C56 /



Vit - 000

ART NO 2030650

Chef's jacket, Men's

French cut. Tapered closure. Hand-sewn, fabric buttons that can withstand mangling. Hanging loop in collar.

MATERIAL

100% cotton - Batavia - 190g
/m2

WASH



SIZES

C44 / C46 / C48 / C50 / C52 / C54 /
C56 / C58 / C60 / C62 / C64 / B48 /
B50 / B52 / B54 / B56





Vit - 000

ART NO 2035650

Chef's jacket, Women's

French cut. Bust dart. Tapered closure. Hand-sewn, fabric buttons that can withstand mangling. Hanging loop in collar.

MATERIAL

100% cotton - Batavia - 190g /m2

SIZES

C34 / C36 / C38 / C40 / C42 / C44 / C46 / C48 / C50 /

WASH



Vit - 000

ART NO 4030250

Chef's jacket, Men's

French cut with tapered closure. Hand-sewn, fabric buttons that can withstand mangling. Hanging loop in collar.

MATERIAL

60/40% cotton/polyester - Satin - 200g/m2

SIZES

C42 / C44 / C46 / C48 / C50 / C52 / C54 / C56 / C58 / C60 / C62 / C64 /

WASH



Svart - 015

ART NO 4330601

Chef's jacket, Men's

Straight cut. Removable black stud buttons included. Seams at the back. Hanging loop in collar.

MATERIAL

100% cotton, Twill. 270g/m²

SIZES

C42 / C44 / C46 / C48 / C50 / C52 / C54 / C56 / C58 / C60 / 62/64

WASH



Garment dyed



JACKETS & BLAZERS



Jeans - 076

ART NO 1076628

Jacket, Women's

Stand-up collar. Hanging loop in collar. Breast pockets. Side pockets; the right side pocket also has a coin pocket in striped fabric. Double rows of buttons, only one with buttonhole.

MATERIAL

100% cotton - Denim - 220g /m2, (7,5 oz)

SIZES

C32 / C34 / C36 / C38 / C40 / C42 / C44 / C46 / C48 / C50 / C52 / C54 /

WASH



Garment washed



Jeans - 076

ART NO 1077628

Jacket, Men's

Stand-up collar. Hanging loop in collar. Breast pockets. Side pockets; the right side pocket also has a coin pocket in striped fabric. Double rows of buttons, only one with buttonhole.

MATERIAL

100% cotton - Denim - 220g /m2, (7,5 oz)

SIZES

C42 / C44 / C46 / C48 / C50 / C52 / C54 / C56 / C58 / C60 / C62 / C64 /

WASH



Garment washed



Svart - 015 Olivgrön - 086

ART NO 1079282

Jacket, Unisex

Classic collar. Hanging loop in collar. Yoke back. Double-stitched seams. Breast pocket, side pockets, left with key holder. Metal buttons/rivets. Length centre back for size M is approx. 75 cm.

MATERIAL

65/35% polyester/cotton - Canvas - 235g/m2

SIZES

XS / S / M / L / XL / XXL / 3XL /

WASH



Tested for harmful substances.
www.oeko-tex.com/standard100



Marin rand - 008

ART NO 1093613

Jacket, Unisex

Classic collar. Hanging loop in collar. Yoke back. Double-stitched seams. Breast pocket, side pockets, left with key holder. Metal buttons/rivets. Length centre back for size M is approx. 75 cm.

MATERIAL

100% cotton - Twill, printed stripe - 255g/m2

WASH



Shrinkage approx. 5%

SIZES

XS / S / M / L / XL / XXL / 3XL /



Vit - 000 Svart - 015

ART NO 1200201

Waiter Jacket, Women's

Stand-up collar. Seams at the back. Breast pocket. Side pockets. Loops for epaulettes (ordered separately). Detachable brass buttons are included. Remove from garment before washing!

MATERIAL

65/35% polyester/cotton - Twill - 210g/m2

WASH



SIZES

C34 / C36 / C38 / C40 / C42 / C44 / C46 / C48 / C50 /



Midnattsblå - 078 Antracitgrå - 116

ART NO 1221223

Jacket, 3/4 sleeve, Men's

Straight cut. 3/4 sleeves with rear slits. Stand-up collar. Hanging loop in collar. Concealed snap buttons. Breast pocket. Side pockets in longitudinal seams at the front. Longitudinal seams at the back. Slits in both sides. Stitching in contrasting colour.

MATERIAL

65/35% polyester/cotton - Plain, yarn dyed - 180g/m2

WASH



SIZES

XS / S / M / L / XL / XXL / 3XL /





Midnattsblå - 078 Antracitgrå - 116

ART NO 1224223

Jacket, 3/4 sleeve, Women's

Slightly waisted. 3/4 sleeves with rear slits. Stand-up collar. Hanging loop in collar. Concealed snap buttons. Breast pocket. Side pockets in longitudinal seams at the front. Longitudinal seams at the back. Slits in both sides. Stitching in contrasting colour.

MATERIAL

65/35% polyester/cotton - Plain, yarn dyed - 180g/m2

SIZES

XS / S / M / L / XL / XXL / 3XL /

WASH



Vit - 000 Svart - 015

ART NO 1300201

Waiter Jacket - Men's

Stand-up collar. Seams at the back. Breast pocket. Side pockets. Loops for epaulettes (ordered separately). Detachable brass buttons are included. Remove from garment before washing!

MATERIAL

65/35% polyester/cotton - Twill - 210g/m2

SIZES

C44 / C46 / C48 / C50 / C52 / C54 / C56 / C58 / C60 /

WASH



Marin - 002 Grafit - 013 Grå - 014 Svart - 015

ART NO 7221596

Blazer, Men's

Two buttons. Collar, type. Breast pocket, side pockets with flap. Four inner pockets. Hanging loop in collar. Rear slit. Buttons in the sleeve cuff. Lining 100% viscose. Length centre back for size C50 approx. 76 cm. Sizes C144-162 have about 2 cm longer sleeves and torso.

MATERIAL

44/54/2% wool/recycled polyester/elastane, 200g/m2

SIZES

C44 / C46 / C48 / C50 / C52 / C54 / C56 / C58 / C60 / C62 / C144 / C146 / C148 / C150 / C152 / C154 / C156 / C158 / C160 / C162

WASH





Marin - 002 Grafit - 013 Grå - 014 Svart - 015

ART NO 7224596

Blazer, Women's

Two buttons. Collar, type.
Breast pocket, side pockets with flap. Inside pocket. Hanging loop in collar. Rear slit. Buttons in the sleeve cuff. Lining 100% viscose. Length centre back for size C38 approx. 60 cm.

MATERIAL

44/54/2% wool/recycled polyester/elastane, 200g/m²

WASH



SIZES

C32 / C34 / C36 / C38 / C40 / C42 / C44 / C46 / C48 / C50 / C52





COATS



Vit - 000

ART NO 1750280

Jacket Unisex

Classic doctor's coat with buttons down the front. The half-belt at the back is adjustable.

- Two sturdy pockets
- Rust and nickel-free snap fasteners
- Back length approx. 102 cm

MATERIAL

65/35% polyester/cotton - Twill
- 245g/m2

WASH



SIZES

XS / S / M / L / XL / XXL / 3XL /





WAISTCOATS



Jeans - 076

ART NO 6522274

Waistcoat stretch, Women's

Yoke at back, longitudinal seams front/back. Doublestitched seams in classic yellow-brown colour. Side pockets, right double with pen pockets, left and zipped breast pocket. Adjustable at back with elasticated button holes. Slits in the sides. Length centre back for size M approx. 73 cm.

MATERIAL

78/22% cotton/polyester T400 stretch - Denim - 300g/m2, (8,5 oz)

SIZES

XS / S / M / L / XL / XXL / 3XL / 4XL / 5XL

WASH



Jeans - 076

ART NO 6523274

Waistcoat stretch, Unisex

Yoke at back, longitudinal seams front/back. Doublestitched seams in classic yellow-brown colour. Side pockets, right double with pen pockets, left and zipped breast pocket. Length centre back for size M approx. 66 cm.

MATERIAL

78/22% cotton/polyester T400 stretch - Denim - 300g/m2, (8,5 oz)

SIZES

XXS / XS / S / M / L / XL / XXL / 3XL / 4XL / 5XL

WASH



Marin - 002 Grafit - 013 Grå - 014 Svart - 015

ART NO 6001596

Waistcoat stretch, Men's

Breast pocket, side pockets, inside pocket. Slits in the sides. Cloth back. Lining 100% viscose. Length centre back for size C50 approx. 63 cm.

MATERIAL

44/54/2% wool/recycled polyester/elastane, 200g/m²

SIZES

C44 / C46 / C48 / C50 / C52 / C54 / C56 / C58 / C60 / C62

WASH





Marin - 002 Grafit - 013 Grå - 014 Svart - 015

ART NO 6004596

Waistcoat stretch, Women's

Seams over the bust/back.
Breast pocket, side pockets,
inside pocket. Slits in the sides.
Cloth back. Lining 100%
viscose. Length centre back for
size C38 approx. 54 cm.

MATERIAL

44/54/2% wool/recycled
polyester/elastane, 200g/m²

SIZES

C32 / C34 / C36 / C38 / C40 / C42 /
C44 / C46 / C48 / C50 / C52

WASH



Svart - 015 Nougat - 022 Olivgrön - 086

ART NO 6013282

Waistcoat Men's

Yoke/centre seam, split at the
back. Double-stitched seams.
Breast pocket, side pockets, left
with key holder. Metal buttons
/rivets. Length centre back for
size M approx. 65 cm.

MATERIAL

65/35% polyester/cotton -
Canvas - 235g/m²

SIZES

XS / S / M / L / XL / XXL / 3XL /

WASH



Svart - 015 Nougat - 022 Olivgrön - 086

ART NO 6014282

Waistcoat Women's

Longitudinal seams at the front.
Yoke/centre seam, split at the
back. Double-stitched seams.
Breast pocket, side pockets, left
with key holder. Metal buttons
/rivets. Length centre back for
size M approx. 56 cm.

MATERIAL

65/35% polyester/cotton -
Canvas - 235g/m²

SIZES

XS / S / M / L / XL / XXL / 3XL / 4XL /

WASH





TUNICS & BUSSARONGS



Vit - 000

ART NO 1104622

Smock, Unisex

Straight cut with collar. Short sleeve.

MATERIAL

100% bomull - Plain, domestik - 180g/m2

WASH



SIZES

XS / S / M / L / XL / XXL / 3XL /



Vit - 000 Marin - 002 Ljusblå - 003 Ljusgrå - 011 Svart - 015 Plommon - 045 Ljuscerise - 052



Grön - 085

ART NO 3510257

Tunic, Women's

Classic healthcare tunic in a light, form-fitting model for a feminine fit. It has plenty of deep pockets and concealed buttons at the front. The fabric is durable and comes in many different colours.

- V-neck collar
- Dual-function breast pocket
- Two angled side pockets reinforced with double cloth
- Phone pocket and key holder
- Side slits

MATERIAL

50/50% cotton/polyester - Plain, domestik - 180g/m2

WASH



SIZES

XXS / XS / S / M / L / XL / XXL / 3XL / 4XL /





Vit - 000 Denimblå - 007 Svart - 015 Mörkröd - 043

ART NO 3510269

Tunic, Women's

Classic healthcare tunic in a light, form-fitting model for a feminine fit. It has plenty of deep pockets and concealed buttons at the front. The soft and thin material is a blend of TENCEL™ Lyocell and GRS Polyester, making it cool and comfortable to wear. The fabric has a nice drape and a lovely lustre. Available in several colours.

- V-neck collar
- Dual-function breast pocket
- Two angled side pockets reinforced with double cloth
- Phone pocket and key holder
- Side slits

MATERIAL

50/30/20% Tencel™ lyocell /polyester/recycled polyester, 190g/m²

WASH



SIZES

XXS / XS / S / M / L / XL / XXL / 3XL / 4XL /



Denimblå - 007 Grå - 014 Röd - 041

ART NO 3510276

Tunic stretch, Women's

Classic healthcare tunic in a light, form-fitting model for a feminine fit. It has plenty of deep pockets and concealed buttons at the front. The heathered effect in the fabric also helps to make stains less visible. The colour retains its character after washing.

- V-neck collar
- Dual-function breast pocket
- Two angled side pockets reinforced with double cloth
- Phone pocket and key holder
- Side slits

MATERIAL

55/43/2% polyester/cotton/XLA stretch, 190g/m²

WASH



SIZES

XXS / XS / S / M / L / XL / XXL / 3XL / 4XL /





Vit - 000 Marin - 002 Ljusblå - 003 Ljusgrå - 011 Svart - 015 Plommon - 045 Ljuscerise - 052



Grön - 085

ART NO 3511257

Tunic Unisex

Classic healthcare tunic in a unisex model that flatters many different body shapes. It has plenty of deep pockets and concealed buttons at the front. The fabric is durable and comes in many different colours.

- V-neck collar
- Dual-function breast pocket
- Two angled side pockets reinforced with double cloth
- Phone pocket and key holder
- Side slits

MATERIAL

50/50% cotton/polyester - Plain, domestik - 180g/m²

WASH



SIZES

XXS / XS / S / M / L / XL / XXL / 3XL / 4XL /



Vit - 000 Denimblå - 007 Svart - 015 Mörkröd - 043

ART NO 3511269

Tunic Unisex

Classic healthcare tunic in a unisex model that flatters many different body shapes. It has plenty of deep pockets and concealed buttons at the front. The soft and thin material is a blend of TENCEL™ Lyocell and GRS Polyester, making it cool and comfortable to wear. The fabric has a nice drape and a lovely lustre. Available in several colours.

- V-neck collar
- Dual-function breast pocket
- Two angled side pockets reinforced with double cloth
- Phone pocket and key holder
- Side slits

MATERIAL

50/30/20% Tencel™ lyocell /polyester/recycled polyester, 190g/m²

WASH



SIZES

XXS / XS / S / M / L / XL / XXL / 3XL / 4XL /





Denimblå - 007 Grå - 014 Röd - 041

ART NO 3511276

Tunic stretch, Unisex

Classic healthcare tunic in a unisex model that flatters many different body shapes. It has plenty of deep pockets and concealed buttons at the front. The heathered effect in the fabric also helps to make stains less visible. The colour retains its character after washing.

- V-neck collar
- Dual-function breast pocket
- Two angled side pockets reinforced with double cloth
- Phone pocket and key holder
- Side slits
- Denim Look-a-like

MATERIAL

55/43/2% polyester/cotton/XLA stretch, 190g/m²

WASH



SIZES

XXS / XS / S / M / L / XL / XXL / 3XL / 4XL /



Vit - 000 Marin - 002 Ljusblå - 003 Ljusgrå - 011 Svart - 015 Plommon - 045 Ljuscerise - 052



Grön - 085

ART NO 3512257

Tunic+, Women's

Classic healthcare tunic in a women's model with an A-line shape. It has plenty of deep pockets and concealed buttons at the front. The fabric is durable and comes in many different colours.

- V-neck collar
- Dual-function breast pocket
- Two angled side pockets reinforced with double cloth
- Phone pocket and key holder
- Side slits

MATERIAL

50/50% cotton/polyester - Plain, domestik - 180g/m²

WASH



SIZES

XXS / XS / S / M / L / XL / XXL / 3XL / 4XL /





Vit - 000 Marin - 002 Ljusblå - 003 Ljusgrå - 011 Svart - 015 Plommon - 045 Ljuscerise - 052



Grön - 085

ART NO 3513257

Jacket, Unisex

Classic healthcare jacket in a unisex model that flatters many different body shapes. It has plenty of deep pockets and concealed buttons at the front. The fabric is durable and comes in many different colours.

- V-neck collar
- Dual-function breast pocket
- Two angled side pockets reinforced with double cloth
- Phone pocket and key holder
- Side slits

MATERIAL

50/50% cotton/polyester - Plain, domestik - 180g/m2

WASH



SIZES

XXS / XS / S / M / L / XL / XXL / 3XL / 4XL /



Vit - 000 Marin - 002 Ljusblå - 003 Ljusgrå - 011 Svart - 015 Plommon - 045 Ljuscerise - 052



Grön - 085

ART NO 3514257

Jacket, Women's

Classic healthcare jacket in a light, form-fitting model for a feminine fit. It has plenty of deep pockets and concealed buttons at the front. The fabric is durable and comes in many different colours.

- V-neck collar
- Dual-function breast pocket
- Two angled side pockets reinforced with double cloth
- Phone pocket and key holder
- Side slits

MATERIAL

50/50% cotton/polyester - Plain, domestik - 180g/m2

WASH



SIZES

XXS / XS / S / M / L / XL / XXL / 3XL / 4XL /





Denimblå - 007 Grå - 014 Röd - 041

ART NO 3520276

Tunic stretch, Women's

Healthcare jacket with a feminine cut, for those who want a durable garment with stretch that feels pleasant against the skin. It has plenty of pockets and concealed buttons at the front. The heathered effect in the fabric also helps to make stains less visible. The colour retains its character after washing.

- Denim look-a-like
- Rounded neck
- Concealed closure with fasteners
- Patch pockets on sides + breast pocket
- Hanging loop in the collar
- Available in several colours

MATERIAL

55/43/2% polyester/cotton/XLA stretch, 190g/m²

WASH



SIZES

XXS / XS / S / M / L / XL / XXL / 3XL / 4XL /



Vit - 000 Denimblå - 007 Svart - 015 Mörkröd - 043

ART NO 3530269

Tunic+, Women's

A-line healthcare tunic with a lovely feminine fit that flatters many different body shapes thanks to the fact that it is cut extra wide over the hips. The soft and thin material is a blend of TENCEL™ Lyocell and GRS Polyester, making it cool and comfortable to wear. The fabric has a nice drape and a lovely lustre. The design is well thought-out and functional.

- Double breast pocket on left side
- Side pockets
- Detailed double collar
- Side slits
- Available in several colours

MATERIAL

50/30/20% Tencel™ lyocell /polyester/recycled polyester, 190g/m²

WASH



SIZES

XXS / XS / S / M / L / XL / XXL / 3XL / 4XL /





SHIRTS



Denimblå - 007

ART NO 1095699

Shirt Men's long sleeve TEE JAYS

Shaped fit. Button-down collar. Fused collar and cuff. Back yoke with box pleat. Inside hanger loop. Curved hem.

MATERIAL

100% cotton, twill. Garment washed. 165g/m²

SIZES

S / M / L / XL / XXL / 3XL / 4XL

WASH



Denimblå - 007

ART NO 1096699

Women's shirt long sleeve TEE JAYS

Shaped fit. Button-down collar. Fused collar and cuff. Back yoke with box pleat. Inside hanger loop. Curved hem.

MATERIAL

100% cotton, twill. Garment washed. 165g/m²

SIZES

XS / S / M / L / XL / XXL / 3XL

WASH



Vit - 000 Ljusblå - 006 Grafit - 013

ART NO 1215306

Shirt, Men's

Classic cut.

MATERIAL

60/40% bomull/polyester - Fil á fil, ONLY white - 130g/m²

SIZES

XS / S / M / L / XL / XXL / 3XL /

WASH





Vit - 000 Ljusblå - 006 Grafit - 013

ART NO 1219306

Shirt, Men's

Slim fit.

MATERIAL

60/40% bomull/polyester - Fil á fil, ONLY white - 130g/m2

WASH



SIZES

XS / S / M / L / XL / XXL / 3XL /



Vit - 000 Svart - 015

ART NO 1219323

Shirt stretch, Men's

Slim fit.

MATERIAL

63/34/3% cotton/polyester /elasthane - Plain - 137g/m2

WASH



SIZES

XS / S / M / L / XL / XXL / 3XL /



Vit - 000 Ljusblå - 006 Grafit - 013

ART NO 1226306

Shirt, Women's

Classic cut, slightly waisted model.

MATERIAL

60/40% bomull/polyester - Fil á fil, ONLY white - 130g/m2

WASH



SIZES

XS / S / M / L / XL / XXL / 3XL /





Vit - 000 Svart - 015

ART NO 1226323

Shirt stretch, Women's

Classic cut, slightly waisted model.

MATERIAL

63/34/3% cotton/polyester /elasthane - Plain - 137g/m2

WASH



SIZES

XS / S / M / L / XL / XXL / 3XL /



Vit - 000 Ljusblå - 006 Grafit - 013

ART NO 1228306

Shirt, 3/4 arm, Women's

Slightly waisted model. Open-neck buttoning. Fold-up 3/4 sleeves with pen pocket on left side. Rounded hem.

MATERIAL

60/40% bomull/polyester - Fil á fil, ONLY white - 130g/m2

WASH



SIZES

XS / S / M / L / XL / XXL / 3XL /



Vit - 000 Svart - 015

ART NO 1228323

Shirt 3/4 arm stretch, Women's

Slightly waisted model. Open-neck buttoning. Fold-up 3/4 sleeves with pen pocket on left side. Rounded hem.

MATERIAL

63/34/3% cotton/polyester /elasthane - Plain - 137g/m2

WASH



SIZES

XS / S / M / L / XL / XXL / 3XL /





Jeans - 076

ART NO 1244628

Shirt, Women's

Yoke, longitudinal seams front /back. Long sleeves with cuffs. Breast pockets with flap. Oxidised snap buttons. Round cut at bottom.

MATERIAL

100% cotton - Denim - 220g /m2, (7,5 oz)

SIZES

XS / S / L / XL / XXL /

WASH



Garment washed



Jeans - 076

ART NO 1245628

Shirt, Men's

Yoke, longitudinal seams front /back. Long sleeves with cuffs. Breast pockets with flap. Oxidised snap buttons. Round cut at bottom.

MATERIAL

100% cotton - Denim - 220g /m2, (7,5 oz)

SIZES

XS / S / M / L / XL / XXL / 3XL /

WASH



Garment washed



Vit - 000

ART NO 1250632

Shirt, Women's

Stand-up collar, breast pocket. Long sleeves with cuffs/slits. Straight hem. Yoke front/back. Back opening for wraparound.

MATERIAL

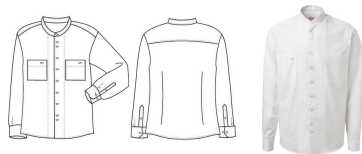
100% cotton - Poplin - 126g/m2

SIZES

XS / S / M / L / XL / XXL / 3XL /

WASH





Vit - 000

ART NO 1251632

Shirt, Men's

Stand-up collar, breast pockets.
Long sleeves with cuffs/slits.
Slightly rounded hem. Yoke
front/back.

MATERIAL

100% cotton - Poplin - 126g/m2

SIZES

XS / S / M / L / XL / XXL / 3XL /

WASH



Denimblå - 007 Jeans - 076

ART NO 1271321

Shirt, Men's

Stand-up collar. Outside tab on
the collar for apron ties. Cuff
with slit/button. Breast pocket.
Yoke on back with box pleat.
Contrasting colour fabric on
inside of collar, inside of cuff,
plus a triangle of fabric at the
bottom side seams. Buttonhole
with orange thread.

MATERIAL

65/35% polyester/cotton - Plain,
melange - 103g/m2

SIZES

XS / S / M / L / XL / XXL / 3XL /

WASH



Blå - 005

ART NO 1271322

Shirt, Men's

Stand-up collar. Outside tab on
the collar for apron ties. Cuff
with slit/button. Breast pocket.
Yoke on back with box pleat.
Contrasting colour fabric on
inside of collar, inside of cuff,
plus a triangle of fabric at the
bottom side seams. Buttonhole
with orange thread.

MATERIAL

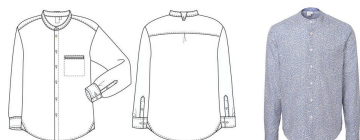
80/20% cotton/polyester - Plain,
yarndyed stripe - 115g/m2

SIZES

XS / S / M / L / XL / XXL / 3XL /

WASH





Blå - 005

ART NO 1271636

Shirt, Men's

Stand-up collar. Outside tab on the collar for apron ties. Cuff with slit/button. Breast pocket. Yoke on back with box pleat. Contrasting colour fabric on inside of collar, inside of cuff, plus a triangle of fabric at the bottom side seams. Buttonhole with orange thread.

MATERIAL

100% cotton - Plain, printed flower - 105g/m2

WASH



SIZES

XS / S / M / L / XL / XXL / 3XL /



Jeans - 076

ART NO 1271639

Shirt, Men's

Stand-up collar. Outside tab on the collar for apron ties. Cuff with slit/button. Breast pocket. Yoke on back with box pleat. Contrasting colour fabric on inside of collar, inside of cuff, plus a triangle of fabric at the bottom side seams. Buttonhole with orange thread.

MATERIAL

100% cotton - Plain, printed flower - 105g/m2

WASH



SIZES

XS / S / M / L / XL / XXL / 3XL /



Denimblå - 007 Jeans - 076

ART NO 1272321

Shirt, 3/4 sleeve, Women's

Stand-up collar. Outside tab on the collar for apron ties. Sleeve edge with slit/button. Breast pocket. Yoke on back with box pleat. Contrasting colour fabric on inside of collar, edge of breast pocket, the inside of sleeve edge, plus a triangle of fabric at the bottom side seams. Buttonhole with orange thread.

MATERIAL

65/35% polyester/cotton - Plain, melange - 103g/m2

WASH



SIZES

XS / S / M / L / XL / XXL / 3XL /





Blå - 005

ART NO 1272322

Shirt, 3/4 sleeve, Women's

Stand-up collar. Outside tab on the collar for apron ties. Sleeve edge with slit/button. Breast pocket. Yoke on back with box pleat. Contrasting colour fabric on inside of collar, edge of breast pocket, the inside of sleeve edge, plus a triangle of fabric at the bottom side seams. Buttonhole with orange thread.

MATERIAL

80/20% cotton/polyester - Plain, yarndyed stripe - 115g/m2

SIZES

XS / S / M / L / XL / XXL / 3XL /

WASH



Blå - 005

ART NO 1272636

Shirt, 3/4 sleeve, Women's

Stand-up collar. Outside tab on the collar for apron ties. Sleeve edge with slit/button. Breast pocket. Yoke on back with box pleat. Contrasting colour fabric on inside of collar, edge of breast pocket, the inside of sleeve edge, plus a triangle of fabric at the bottom side seams. Buttonhole with orange thread.

MATERIAL

100% cotton - Plain, printed flower - 105g/m2

SIZES

XS / S / M / L / XL / XXL / 3XL /

WASH



Jeans - 076

ART NO 1272639

Shirt, 3/4 sleeve, Women's

Stand-up collar. Outside tab on the collar for apron ties. Sleeve edge with slit/button. Breast pocket. Yoke on back with box pleat. Contrasting colour fabric on inside of collar, edge of breast pocket, the inside of sleeve edge, plus a triangle of fabric at the bottom side seams. Buttonhole with orange thread.

MATERIAL

100% cotton - Plain, printed flower - 105g/m2

SIZES

XS / S / M / L / XL / XXL / 3XL /

WASH





Denimblå - 007 Jeans - 076

ART NO 1274321

Shirt, Women's

Stand-up collar. Outside tab on the collar for apron ties. Cuff with slit/button. Breast pocket. Yoke on back with box pleat. Contrasting colour fabric on inside of collar, inside of cuff, plus a triangle of fabric at the bottom side seams. Buttonhole with orange thread.

MATERIAL

65/35% polyester/cotton - Plain, melange - 103g/m2

SIZES

XS / S / M / L / XL / XXL / 3XL /

WASH



Blå - 005

ART NO 1274322

Shirt, Women's

Stand-up collar. Outside tab on the collar for apron ties. Cuff with slit/button. Breast pocket. Yoke on back with box pleat. Contrasting colour fabric on inside of collar, inside of cuff, plus a triangle of fabric at the bottom side seams. Buttonhole with orange thread.

MATERIAL

80/20% cotton/polyester - Plain, yarndyed stripe - 115g/m2

SIZES

XS / S / M / L / XL / XXL / 3XL /

WASH



Blå - 005

ART NO 1274636

Shirt, Women's

Stand-up collar. Outside tab on the collar for apron ties. Cuff with slit/button. Breast pocket. Yoke on back with box pleat. Contrasting colour fabric on inside of collar, inside of cuff, plus a triangle of fabric at the bottom side seams. Buttonhole with orange thread.

MATERIAL

100% cotton - Plain, printed flower - 105g/m2

SIZES

XS / S / M / L / XL / XXL / 3XL /

WASH



Jeans - 076

ART NO 1274639

Shirt, Women's

Stand-up collar. Outside tab on the collar for apron ties. Cuff with slit/button. Breast pocket. Yoke on back with box pleat. Contrasting colour fabric on inside of collar, inside of cuff, plus a triangle of fabric at the bottom side seams. Buttonhole with orange thread.

MATERIAL

100% cotton - Plain, printed flower - 105g/m2

WASH

SIZES

XS / S / M / L / XL / XXL / 3XL /



SWEATSHIRT & KNITTED



Marin - 002 Grå - 014 Svart - 015

ART NO 6131299

Hoodie unisex. TEE JAYS

Double stitched. Double dyed.
Elastane in all ribs for better stability. 3 thread fabric for smooth surface. Brushed inside. Long fiber egyptian cotton.

MATERIAL

70/30% ringspun cotton /polyester. 310-320g/m²

WASH



SIZES

S / M / L / XL / XXL / 3XL



Marin - 002 Svart - 015

ART NO 7801199

Fleece Jacket

Two side pockets. Adjustable at bottom.

MATERIAL

100% polyester. 260 g/m²

WASH



SIZES

XS / S / M / L / XL / XXL / 3XL



POLO SHIRTS & T-SHIRTS



Vit - 000 Marin - 002 Blå - 005 Ljusgrå - 011 Svart - 015 Röd - 041

ART NO 1106199

T-shirt, Unisex

Round neck with ribbon edge,
short sleeve.

MATERIAL

100% cotton, 155g/m²

SIZES

S / M / L / XL / XXL / 3XL

WASH



Vit - 000 Marin - 002 Mörkgrå - 010 Svart - 015 Olivgrön - 086

ART NO 6101299

Polo shirt -Men's TEE JAYS

Flat knit collar with elastane.
Mini pique. Double preshrunk.
Neck tape. Clean finished
placket.

MATERIAL

95/5% ringspun combed cotton
/elastane. Mini pique. 215g/m²

SIZES

S / M / L / XL / XXL / 3XL

WASH



Vit - 000 Marin - 002 Mörkgrå - 010 Svart - 015 Olivgrön - 086

ART NO 6102299

Polo Women's TEE JAYS

Flat knit collar with elastane.
Mini pique. Double preshrunk.
Neck tape. Clean finished
placket.

MATERIAL

95/5% ringspun combed cotton
/elastane. Mini pique. 215g/m²

SIZES

S / M / L / XL / XXL / 3XL

WASH





Vit - 000 Marin - 002 Grå - 014 Svart - 015

ART NO 6106299

Polo shirt Women's

Fitted shape, with short sleeves. Ribbed collar/cuffs. Placket with four buttons. Crescent reinforcement in the neck. Slits in the sides.

MATERIAL

50/50% polyester/cotton, 220g /m²

WASH



White = wash 80 degrees

SIZES

XXS / XS / S / M / L / XL / XXL / 3XL / 4XL



Vit - 000 Marin - 002 Grå - 014 Svart - 015

ART NO 6107299

Polo shirt Unisex

Short sleeve. Ribbed collar /cuffs. Placket with three buttons. Crescent reinforcement in the neck. Slits in the sides.

MATERIAL

50/50% polyester/cotton, 220g /m²

WASH



White = wash 80 degrees

SIZES

XS / S / M / L / XL / XXL / 3XL / 4XL / 5XL



Vit - 000 Svart - 015

ART NO 6110199

T-shirt, Women's

Fitted design with round neck. Long sleeves.

MATERIAL

95/5% cotton/lycra, 190g/m²

WASH



SIZES

XS / S / M / L / XL / XXL





Vit - 000 Svart - 015

ART NO 6111199

T-shirt, Men's

Round neck. Long sleeves.

MATERIAL

95/5% cotton/lycra, 190g/m²

SIZES

S / M / L / XL / XXL / 3XL

WASH



Vit - 000 Marin - 002 Blå - 005 Ljusgrå - 011 Svart - 015 Röd - 041

ART NO 6116199

Top, Women's

Round neck with ribbon edge, short sleeve.

MATERIAL

100% cotton, 155g/m²

SIZES

XS / S / M / L / XL / XXL

WASH



Vit - 000 Marin - 002 Mörkgrå - 010 Svart - 015 Olivgrön - 086

ART NO 6120199

T-shirt Women's TEE JAYS

Fashion relaxed fit. Larger neck opening with self-fabric raw edge coll. Shoulder to shoulder neck tape. Double preshrunk.

MATERIAL

100% ringspun combed cotton. 160g/m²

SIZES

S / M / L / XL / XXL

WASH





Vit - 000 Marin - 002 Mörkgrå - 010 Svart - 015 Olivgrön - 086

ART NO 6121199

T-shirt men's TEE JAYS

Fashion relaxed fit. Larger neck opening with self-fabric raw edge coll. Shoulder to shoulder neck tape. Double preshrunk.

MATERIAL

100% ringspun combed cotton.
160g/m²

WASH



SIZES

S / M / L / XL / XXL / 3XL



DRESSES



Vit - 000 Marin - 002 Ljusblå - 003 Ljusgrå - 011 Svart - 015 Plommon - 045 Ljuscerise - 052



Grön - 085

ART NO 2524257

Dress

A classic healthcare dress with a gathered skirt. It has plenty of pockets and concealed buttons at the front. The fabric is durable and comes in many different colours.

- V-neck collar
- Dual-function breast pocket
- Two angled side pockets reinforced with double cloth
- Phone pocket and key holder
- Side slits
- Approx 98 cm long

MATERIAL

50/50% cotton/polyester - Plain, domestik - 180g/m²

WASH



SIZES

XXS / XS / S / M / L / XL / XXL / 3XL / 4XL /



Vit - 000 Denimblå - 007 Svart - 015 Mörkröd - 043

ART NO 2524269

Dress

A classic healthcare dress with a gathered skirt. It has plenty of pockets and concealed buttons at the front. The soft and thin material is a blend of TENCEL™ Lyocell and GRS Polyester, making it cool and comfortable to wear. The fabric has a nice drape and a lovely lustre. Available in several colours.

- V-neck collar
- Dual-function breast pocket
- Two angled side pockets reinforced with double cloth
- Phone pocket and key holder
- Side slits
- Approx 98 cm long

MATERIAL

50/30/20% Tencel™ lyocell /polyester/recycled polyester, 190g/m²

WASH



SIZES

XXS / XS / S / M / L / XL / XXL / 3XL / 4XL /





Denimblå - 007 Grå - 014 Röd - 041

ART NO 2524276

Dress stretch

A classic healthcare dress with a gathered skirt, for those who want a durable garment with stretch that feels pleasant against the skin. It has plenty of pockets and concealed buttons at the front. The heathered effect in the fabric also helps to make stains less visible. The colour retains its character after washing.

- V-neck collar
- Dual-function breast pocket
- Two angled side pockets reinforced with double cloth
- Phone pocket and key holder
- Side slits
- Approx 98 cm long
- Denim Look-a-like

MATERIAL

55/43/2% polyester/cotton/XLA stretch, 190g/m²

WASH



SIZES

XXS / XS / S / M / L / XL / XXL / 3XL / 4XL /



Marin - 002 Grafit - 013 Grå - 014 Svart - 015

ART NO 2560596

Dress stretch

Straight cut with incisions in the back. Short sleeve. Round neck with decoration opening at front. Pockets in the side seam. Long concealed zip at the back. Lined with 100% viscose. Length centre for size C38 is 97 cm.

MATERIAL

44/54/2% wool/recycled polyester/elastane, 200g/m²

WASH



SIZES

C32 / C34 / C36 / C38 / C40 / C42 / C44 / C46 / C48 / C50 / C52



Svart - 015

ART NO 2562591

Dress stertch

Round neck with satin ribbon edge. 3/4 sleeve. Pockets in the side seams. Flared at bottom hem. To pull over your head. Unlined. Length centre back for size C38 is approx. 97 cm.

MATERIAL

72/23/5% polyester/viscose /elastane, 205g/m²

WASH



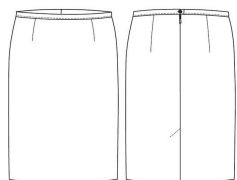
SIZES

XXS / XS / S / M / L / XL / XXL / 3XL





SKRITS



Marin - 002 Grafit - 013 Grå - 014 Svart - 015

ART NO 2310596

Skirt, stretch

Straight cut with waistband. Button, hidden zip, rear slit. No pockets. Lining 100% viscose. Length for size C38 is 60 cm.

MATERIAL

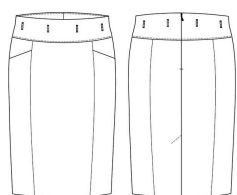
44/54/2% wool/recycled polyester/elastane, 200g/m²

WASH



SIZES

C32 / C34 / C36 / C38 / C40 / C42 / C44 / C46 / C48 / C50 / C52



Marin - 002 Grafit - 013 Grå - 014 Svart - 015

ART NO 2313596

Pencil skirt, stretch

Gore-cut with pockets in side gore front. High waist with belt loops. Black belt (length 95 cm) is included. Hidden button/zip, rear slit. Lining 100% viscose. Length for size C38 is 70 cm.

MATERIAL

44/54/2% wool/recycled polyester/elastane, 200g/m²

WASH



SIZES

C32 / C34 / C36 / C38 / C40 / C42 / C44 / C46 / C48 / C50 / C52





TROUSERS



Svart - 015

ART NO 2116201

Trousers, Unisex

Extra spacious style with three sizes in one. Adjustable waist in three positions, leg length in two.

MATERIAL

65/35% polyester/cotton - Twill - 210g/m2

SIZES

XS / S / M / L / XL /

WASH



Vit - 000 Marin - 002 Svart - 015

ART NO 8008299

Tights

Elastic waistband. Inseam length in size M 71 cm.

- Washable at 60°C
- Vortex yarn (spinning method) - good against pilling

MATERIAL

57% cotton/38% polyester/5% elastane, single jersey Vortex yarn, 190g/m2

SIZES

XXS / XS / S / M / L / XL / XXL / 3XL / 4XL / 5XL

WASH



Svart - 015

ART NO 8301262

Atacac Trousers with stretch effect, Unisex

Flat front. Side pockets, right with coin pocket. Button fly. Full waistband front, elasticated back, belt loops. Yoke-cut, sewn-on back pockets.

MATERIAL

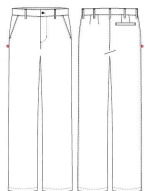
45/20/35% virgin polyester /recycled polyester/BCI cotton - Twill - 210g/m2

SIZES

XXS / XS / S / M / L / XL / XXL / 3XL /

WASH





Svart - 015 Sand - 024 Midnattsblå - 078

ART NO 8619293

Trousers stretch, men's

Slightly slimmer fit and leg width. Full waistband with belt loops. Side pockets. Slash pocket at back.

MATERIAL

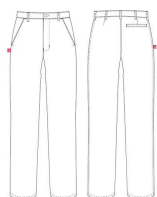
62/34/4% polyester/cotton/XLA stretch - Twill - 210g/m2

WASH



SIZES

C44 / C46 / C48 / C50 / C52 / C54 / C56 / C58 / C60 / C146 / C148 / C150 / C152 / C154 /



Svart - 015 Sand - 024 Midnattsblå - 078

ART NO 8618293

Trousers stretch, women's

Slightly slimmer fit and leg width. Full waistband with belt loops. Side pockets. Slash pocket at back.

MATERIAL

62/34/4% polyester/cotton/XLA stretch - Twill - 210g/m2

WASH



SIZES

C34 / C36 / C38 / C40 / C42 / C44 / C46 / C48 / C50 /



Vit - 000 Marin - 002 Ljusgrå - 011 Svart - 015

ART NO 8003257

Trousers two in one, Unisex

Adjustable Trousers with two lengths, button and tab, snap buttons at bottom of leg for width adjustment. Smooth front, elasticated insert at rear waistband. Belt loops, key holder at front. Angled side pockets. Angled pocket with flap on right leg, lockable mobile phone pocket and top-stitching for a pen.

MATERIAL

50/50% cotton/polyester - Plain, domestik - 180g/m2

WASH



SIZES

XXS / XS / S / M / L / XL / XXL / 3XL / 4XL /





Vit - 000 Marin - 002 Ljusgrå - 011 Svart - 015

ART NO 8004257

Trousers two in one, Women's

Adjustable Trousers with two lengths, button and tab, snap buttons at bottom of leg for width adjustment. Smooth front, elasticated insert at rear waistband. Belt loops, key holder at front. Angled side pockets. Angled pocket with flap on right leg, lockable mobile phone pocket and top-stitching for a pen.

MATERIAL

50/50% cotton/polyester - Plain, domestik - 180g/m2

WASH



SIZES

XXS / XS / S / M / L / XL / XXL / 3XL / 4XL /



Vit - 000 Marin - 002 Ljusgrå - 011 Svart - 015

ART NO 8005257

Elasticated trousers, Unisex

Functional and durable unisex trousers with a well thought-out design. Suitable for different body lengths thanks to the buttonhole elastic at the ankles, which helps to keep the trousers neatly in place. The comfortable elasticated waistband and a drawstring at the waist ensure a flattering fit for different body types.

- Suitable for many industries, e.g. kitchens, healthcare or service
- Angled side pockets with key holder in the right pocket
- Angled leg pockets with a practical flap on the right pocket
- Left double pocket
- Available in many different colours

MATERIAL

50/50% cotton/polyester - Plain, domestik - 180g/m2

WASH



SIZES

XXS / XS / S / M / L / XL / XXL / 3XL / 4XL /



Vit - 000 Marin - 002 Svart - 015

ART NO 8006257

Maternity trousers

Comfortable maternity trousers with a straight leg, which can be adjusted at the waist during pregnancy thanks to buttonhole elastic and stretch jersey over the stomach. The fabric is durable and comes in many different colours.

- Angled leg pocket with flap on right side
- Suitable for many industries, e.g. kitchens, healthcare or service

MATERIAL

50/50% cotton/polyester - Plain, domestik - 180g/m2

WASH



SIZES

XXS / XS / S / M / L / XL / XXL / 3XL / 4XL /





Vit - 000 Denimblå - 007 Svart - 015

ART NO 8203269

Trousers with cuffs, Unisex

Unisex trousers that flatter many different body shapes. The soft and thin material is a blend of TENCEL™ Lyocell and GRS Polyester, making it cool and comfortable to wear. The fabric has a nice drape and a lovely lustre. Available in several colours.

- Elasticated waist with drawstring
- Zipper and button
- Side pockets with key holder in the right pocket
- Double leg pockets on both legs (snap fasteners on the right)
- Back pocket
- Foldable cuffs at hems

MATERIAL

50/30/20% TENCEL™ lyocell /polyester/recycled polyester, 190g/m²

WASH



SIZES

XXS / XS / S / M / L / XL / XXL / 3XL / 4XL /



Denimblå - 007 Grå - 014

ART NO 8203276

Trousers with cuff, stretch, Unisex

Durable and comfortable unisex trousers in denim look-a-like with stretch. The heathered effect in the fabric also helps to make stains less visible. The colour retains its character after washing. Suitable for many different body shapes.

- Elasticated waist with drawstring
- Zipper and button
- Side pockets with key holder in the right pocket
- Double leg pockets on both legs (snap fasteners on the right)
- Back pocket
- Foldable cuffs at hems

MATERIAL

55/43/2% polyester/cotton/XLA stretch, 190g/m²

WASH



SIZES

XXS / XS / S / M / L / XL / XXL / 3XL / 4XL /



Vit - 000 Marin - 002 Svart - 015

ART NO 8602280

Trousers, Women's

Flat front. Waistband with belt loops. Angled pockets. Sewn back pocket on left side. Phone pocket at waistband on right side. Leg pockets, right pocket with two pen pockets, left pocket with flap.

MATERIAL

65/35% polyester/cotton - Twill - 245g/m²

WASH



SIZES

C30 / C32 / C34 / C36 / C38 / C40 / C42 / C44 / C46 / C48 / C50 / C52 / C54 / C56 /





ART NO 8603280

Trousers, Men's

Flat front. Waistband with belt loops. Angled pockets. Sewn back pocket on left side. Phone pocket at waistband on right side. Leg pockets, right pocket with two pen pockets, left pocket with flap.

MATERIAL

65/35% polyester/cotton - Twill - 245g/m2

WASH



SIZES

C42 / C44 / C46 / C48 / C50 / C52 / C54 / C56 / C58 / C60 / C62 / C64 / C66 / C68 / C146 / C148 / C150 / C152 / C154 / C156 / C158 / D100 / D104 / D116 / D120



Jeans - 076

ART NO 8620279

Jeans stretch, Women's

Classic five pocket style, side pockets, back pockets, coin pocket. Stitching in contrasting colour. Patent button, rivets. Zip fly. Belt loops.

MATERIAL

70/30% cotton/stretch T400, 340g/m²

WASH



Garment washed



Jeans - 076

ART NO 8621279

Jeans stretch, Men's

Classic five pocket style, side pockets, back pockets, coin pocket. Stitching in contrasting colour. Patent button, rivets. Zip fly. Belt loops.

MATERIAL

70/30% cotton/stretch T400, 340g/m²

WASH



Garment washed



Jeans - 076

ART NO 8628274

Jeans Trousers stretch, Women's

Slim fit and leg width. Full waistband with belt loops. Metal zip fly. Angled side pockets, coin pocket. Leg pockets, left with flap and bellows pleat, right with double pocket, one with pen pocket. Slash pockets, back.

MATERIAL

78/22% cotton/polyester T400 stretch - Denim - 300g/m2, (8,5 oz)

WASH



Garment washed

SIZES

C30 / C32 / C34 / C36 / C38 / C40 / C42 / C44 / C46 / C48 / C50 / C52 / C54 / C56 / C58 / 132 / C134 / C136 / C138 / C140 / C142 / C144 / C146 / C148



Jeans - 076

ART NO 8629274

Jeans Trousers stretch, Men's

Slim fit and leg width. Full waistband with belt loops. Metal zip fly. Angled side pockets, coin pocket. Leg pockets, left with flap and bellows pleat, right with double pocket, one with pen pocket. Slash pockets, back.

MATERIAL

78/22% cotton/polyester T400 stretch - Denim - 300g/m2, (8,5 oz)

WASH



Garment washed

SIZES

C40 / C42 / C44 / C46 / C48 / C50 / C52 / C54 / C56 / C58 / C60 / C62 / C64 / C66 / C68 / C144 / C146 / C148 / C150 / C152 / C154 / C156 /



Jeans - 076

ART NO 8632247

Trousers stretch, Women's

Full waistband with belt loops, cross loop centre, back. Key holder with ring. Yoke-cut back. Zip fly. Tone on tone double-stitched seams. Stitched side pockets, right with coin pocket. Sewn back pocket, right side.

MATERIAL

56/42/2% polyester/cotton/XLA stretch - Denim look á like - 260g/m2

WASH



SIZES

C34 / C36 / C38 / C40 / C42 / C44 / C46 / C48 / C50 / C56 /





Jeans - 076

ART NO 8633247

Trousers stretch, Men's

Full waistband with belt loops, cross loop centre, back. Key holder with ring. Yoke-cut back. Zip fly. Tone on tone double-stitched seams. Stitched side pockets, right with coin pocket. Sewn back pocket, right side.

MATERIAL

56/42/2% polyester/cotton/XLA stretch - Denim look á like - 260g/m2

WASH



SIZES

C44 / C46 / C48 / C50 / C52 / C54 / C56 / C58 / C60 /



Marin - 002 Svart - 015

ART NO 8642280

Maternity trousers

Concealed stretch jersey over stomach area. The fit around the waist is adjusted using elasticated button holes. Leg pockets, right pocket with two pen pockets, left pocket with flap.

MATERIAL

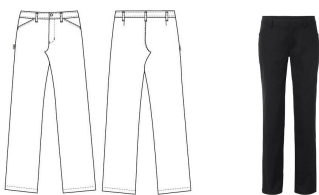
65/35% polyester/cotton - Twill - 245g/m2 Tricot: 95/5% cotton /elastan

WASH



SIZES

C34 / C36 / C38 / C40 / C42 / C44 / C46 / C48 / C50 / C52 /



Svart - 015

ART NO 8652293

Trousers stretch, Women's

Shape-cut waistband. Angled side pockets, belt loops.

MATERIAL

62/34/4% polyester/cotton/XLA stretch - Twill - 210g/m2

WASH



SIZES

C34 / C36 / C38 / C40 / C42 / C44 / C46 / C48 / C50 /





Pepita svart - 019

ART NO 8017203

Chef's trousers, Child

Elasticated waist with drawstring. Side pockets. NOT recommended for children under 3 years of age due to loose parts.

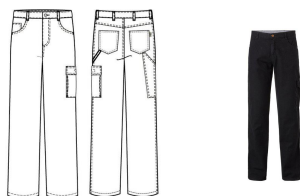
MATERIAL

52/48% cotton/polyester - Pepita, yarn dyed check - 245g /m2

SIZES

CTL 100 / CTL 110 / CTL 120 / CTL 130 / CTL 140 / CTL 150 /

WASH



Svart - 015

ART NO 8077601

Trousers, Men's

Waistband with belt loops. Side pockets, coin pocket, back pocket, pocket with flap and hammer loop on left leg, folding rule pocket on right leg.

MATERIAL

100% cotton, Twill. 270g/m²

SIZES

C44 / C46 / C48 / C54 / C56 / C58 / C60 / C64 / C146 / C148 / C150 / C154 /

WASH



Garment dyed



Marin - 002 Grafit - 013 Grå - 014 Svart - 015

ART NO 8460596

Trousers stretch, Women's

Straight fit. Flat front. Waistband with belt loops. Pockets in the side seam. Zip/button. Leg width approx. 16 cm. Inseam for size C38 approx. 74 cm.

MATERIAL

44/54/2% wool/recycled polyester/elastane, 200g/m²

SIZES

C32 / C34 / C36 / C38 / C40 / C42 / C44 / C46 / C48 / C50 / C52

WASH





Marin - 002 Grafit - 013 Grå - 014 Svart - 015

ART NO 8462596

Trousers stretch, Women's

Slightly wider across hips /thighs. Flat front. Waistband with belt loops. Slashed side pockets. Zip/button. Leg width approx. 18 cm. Inseam for size C38 approx. 81 cm.

MATERIAL

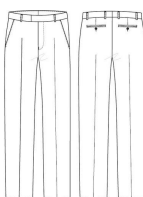
44/54/2% wool/recycled polyester/elastane, 200g/m²

WASH



SIZES

C32 / C34 / C36 / C38 / C40 / C42 / C44 / C46 / C48 / C50 / C52



Marin - 002 Grafit - 013 Grå - 014 Svart - 015

ART NO 8483596

Trousers stretch, Men's

Flat front. Waistband with belt loops. Slashed side pockets. Zip /hook & eye. Piped pockets back. Knee lining front of 100% viscose. Leg width approx. 18 cm. inseam for size C50 approx. 83 cm. Sizes C144-162 have about 4 cm longer inseam.

MATERIAL

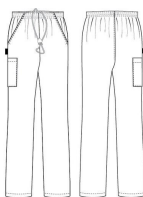
44/54/2% wool/recycled polyester/elastane, 200g/m²

WASH



SIZES

C44 / C46 / C48 / C50 / C52 / C54 / C56 / C58 / C60 / C62 / C144 / C146 / C148 / C150 / C152 / C154 / C156 / C158 / C160 / C162



Pepita svart - 019

ART NO 8601203

Trousers, Unisex

Functional basic trousers in a unisex model. The fabric is durable

- Suitable for many industries, e.g. kitchens, healthcare or service
- Elasticated waist with drawstring
- Angled side pockets
- Pocket on right leg

MATERIAL

52/48% cotton/polyester - Pepita, yarn dyed check - 245g /m²

WASH



SIZES

XXS / XS / S / M / L / XL / XXL / 3XL / 4XL /





Vit - 000



Marin - 002



Svart - 015

ART NO 8601257

Trousers, Unisex

Functional basic trousers in a unisex model. The fabric is durable

- Elasticated waist with drawstring
- Angled side pockets
- Pocket on right leg
- OEKO-TEX® certified

MATERIAL

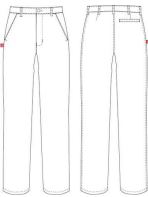
50/50% cotton/polyester - Plain, domestik - 180g/m2

WASH



SIZES

XXS / XS / S / M / L / XL / XXL / 3XL / 4XL /



Svart - 015



ART NO 8618201

Trousers, Women's

Slightly slimmer fit and leg width. Full waistband with belt loops. Side pockets. Slash pocket at back.

MATERIAL

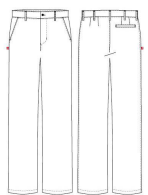
65/35% polyester/cotton - Twill - 210g/m2

WASH



SIZES

C30 / C32 / C34 / C36 / C38 / C40 / C42 / C44 / C46 / C48 / C50 / C52 / C54 / C56 / C58 /



Svart - 015



ART NO 8619201

Trousers, Men's

Slightly slimmer fit and leg width. Full waistband with belt loops. Side pockets. Slash pocket at back.

MATERIAL

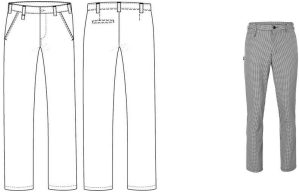
65/35% polyester/cotton - Twill - 210g/m2

WASH



SIZES

C42 / C44 / C46 / C48 / C50 / C52 / C54 / C56 / C58 / C60 / C62 / C64 / C66 / C68 / C144 / C146 / C148 / C150 / C152 / C154 / C156 /



Pepita svart - 019

ART NO 8625203

Trousers, Men's

Flat front. Full waistband with belt loops. Key holder. Zip fly. Angled side pockets. Piping on back pocket.

MATERIAL

52/48% cotton/polyester -
Pepita, yarn dyed check - 245g /m2

WASH



SIZES

C42 / C44 / C46 / C48 / C50 / C52 /
C54 / C56 / C58 / C60 / C62 / C64 /
C66 / C68 / C146 / C148 / C150 /
C152 / C154 / D104 / D108 / D116 /
D120



Pepita svart - 019

ART NO 8626203

Trousers, Women's

Flat front. Full waistband with belt loops, elasticated insert at back. Key holder. Zip fly. Angled side pockets. Piping on back pocket.

MATERIAL

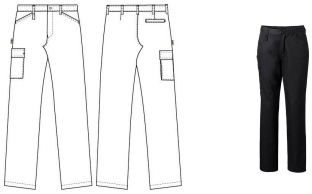
52/48% cotton/polyester -
Pepita, yarn dyed check - 245g /m2

WASH



SIZES

C34 / C36 / C38 / C40 / C42 / C44 /
C46 / C48 / C50 / C52 / C54 /



Svart - 015

ART NO 8630201

Trousers, Women's

Flat front. Waistband with button, belt loops. Zip fly. Angled pockets. Back pocket right side. Leg pocket with flap on right side.

MATERIAL

65/35% polyester/cotton - Twill
- 210g/m2

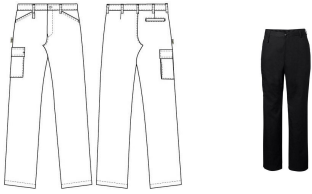
WASH



SIZES

C30 / C32 / C34 / C36 / C38 / C40 /
C42 / C44 / C46 / C48 / C50 /





Svart - 015

ART NO 8631201

Trousers, Men's

Flat front. Waistband with button, belt loops. Zip fly. Angled pockets. Back pocket right side. Leg pocket with flap on right side.

MATERIAL

65/35% polyester/cotton - Twill
- 210g/m2

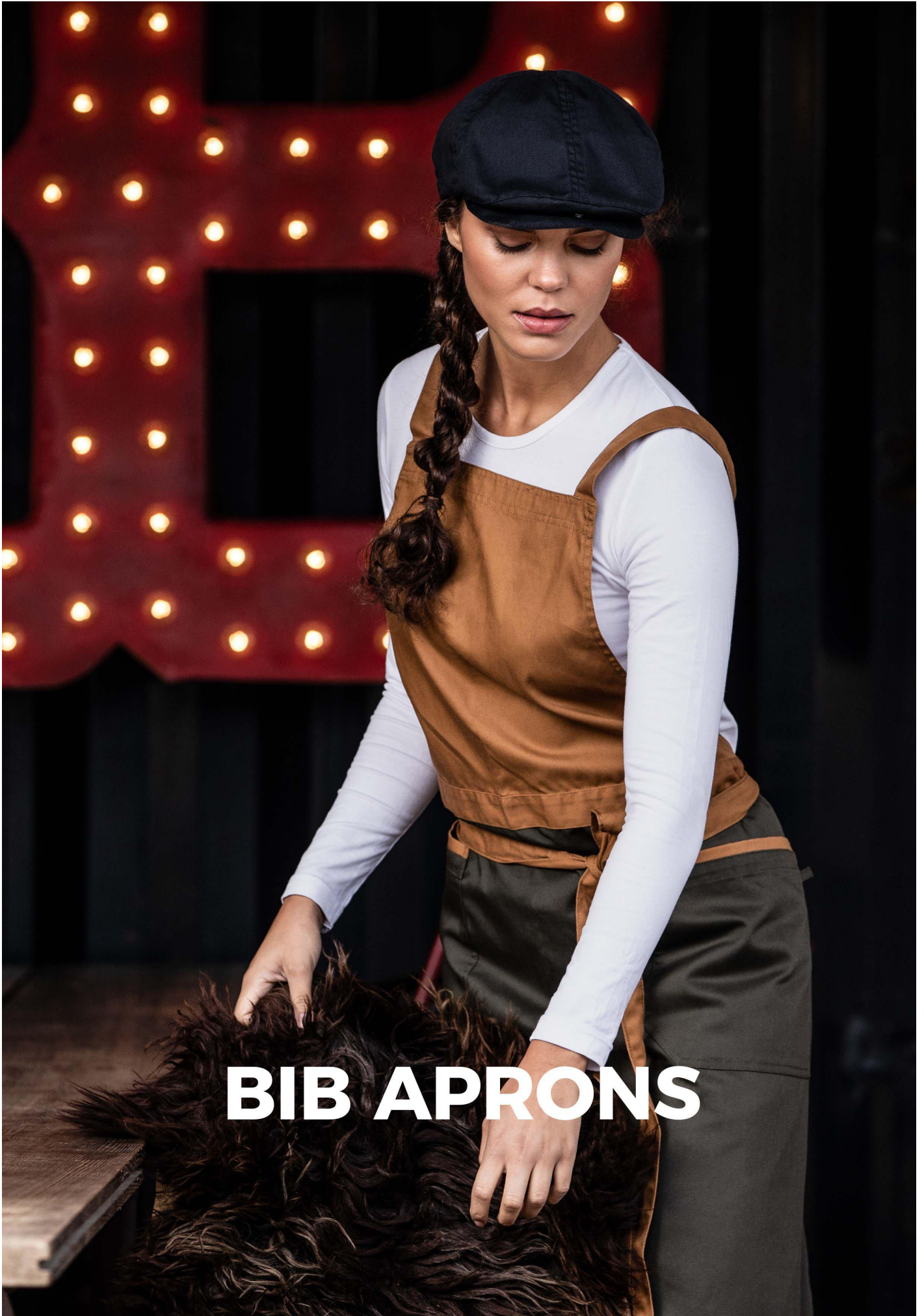
WASH



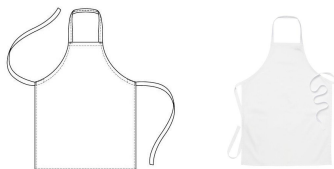
SIZES

C42 / C44 / C46 / C48 / C50 / C52 /
C54 / C56 / C58 / C60 / C62 / C64 /
C66 /





BIB APRONS



Vit - 000

ART NO 1333651

Bib apron

Models without pockets. Fixed neck strap. Polyester herringbone belt.

• 75 x 95 cm

MATERIAL

100% cotton - Satin - 240g/m2

SIZES

one size

WASH



Vit - 000

Marin - 002

Svart - 015

Röd - 041

ART NO 1338617

Plastic bib apron

Models without pockets. Fixed neck strap. Polyester herringbone belt.

• 75 x 100 cm

MATERIAL

Plastic - 300g/m2

SIZES

one size

WASH



Sand - 024

ART NO 2337201

Bib apron

Adjustable neck strap. Pocket on right side with bellows pleat, key holder. Loop for hanging.

• 75 x 110 cm

MATERIAL

65/35% polyester/cotton - Twill - 210g/m2

SIZES

one size

WASH





Midnattsblå - 078 Antracitgrå - 116

ART NO 2337229

Bib apron

Adjustable neck strap. Pocket on right side with bellows pleat, key holder. Loop for hanging.

• 75 x 110 cm

MATERIAL

65/35% polyester/cotton - Plain, yarn dyed stripe - 180g/m2

WASH



SIZES

one size



Vit - 000 Marin - 002 Grå - 014 Svart - 015 Brun - 028

ART NO 2337280

Bib apron, 75 x 110 cm

Adjustable neck strap. Pocket on right side with bellows pleat, key holder. Loop for hanging.

MATERIAL

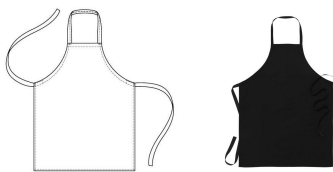
65/35% polyester/cotton - Twill - 245g/m2

WASH



SIZES

one size



Svart - 015

ART NO 3333615

Bib apron

Models without pockets. Fixed neck strap. Polyester herringbone belt.

• 75 x 95 cm

MATERIAL

100% cotton - Twill - 245g/m2

WASH



SIZES

one size





Svart - 015

ART NO 3334615

Bib apron

Inside pocket on the right side of the Bib apron. Adjustable fabric neck strap. Polyester herringbone belt at waist.

• 90 x 110 cm

MATERIAL

100% cotton - Twill - 245g/m2

WASH



SIZES

one size



Svart - 015 Olivgrön - 086

ART NO 4065282

Bib apron

Adjustable braces with button/buttonholes at the sides. Side pockets, left with key holder, right with corkscrew and pencil pocket.

• 90 x 95 cm

MATERIAL

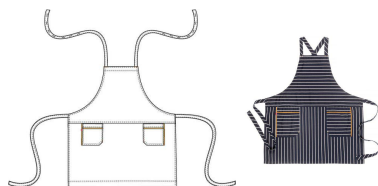
65/35% polyester/cotton - Canvas - 235g/m2

WASH



SIZES

one size



Marin rand - 008

ART NO 4067613

Bib apron

Adjustable braces with button/buttonholes at the sides. Side pockets, left with key holder, right with corkscrew and pen pocket, piping in nougat.

• 85 x 90 cm

MATERIAL

100% cotton - Twill, printed stripe - 255g/m2

WASH

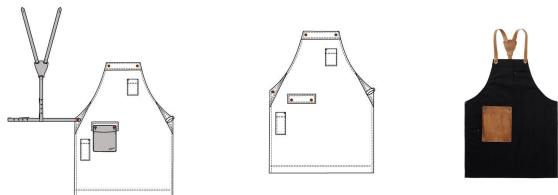


Shrinkage approx. 5%.

SIZES

one size





Svart - 015

ART NO 4075282

Bib apron

Breast pocket, pen pocket at right-hand bottom edge. Leather details, art. no. 0565, must be purchased separately. Remove before washing.

• 75 x 90 cm

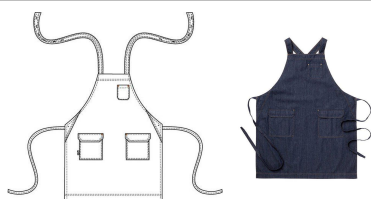
MATERIAL

65/35% polyester/cotton - Canvas - 235g/m2

SIZES

one size

WASH



Jeans - 076

ART NO 4076628

Bib apron

Adjustable braces with button /buttonholes at the sides. Breast pocket, side pockets with flap, the right one with a key holder.

• 75 x 90 cm

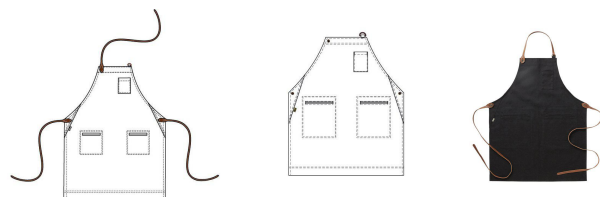
MATERIAL

100% cotton - Denim - 220g /m2, (7,5 oz)

SIZES

one size

WASH



Svart - 015

ART NO 4077282

Bib apron

Breast pocket, side pockets. Buttons, metal D rings. Leather details (art. no. 0566) purchased separately. Remove before washing.

• 75 x 90 cm

MATERIAL

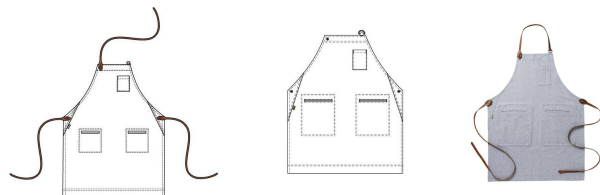
65/35% polyester/cotton - Canvas - 235g/m2

SIZES

one size

WASH





Blå - 005

ART NO 4077769

Bib apron

Breast pocket, side pockets. Buttons, metal D rings. Leather details (art. no. 0566) purchased separately. Remove before washing.

• 75 x 90 cm

MATERIAL

53/47% cotton/linen - Plain, yarn dyed - 194g/m2

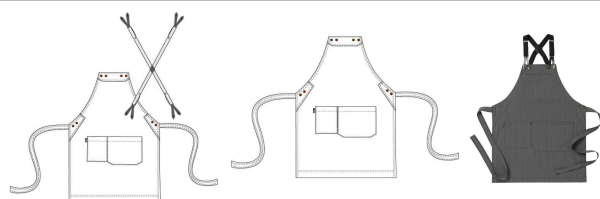
SIZES

one size

WASH



Shrinkage about 4-6% lengthwise



Svart rand - 018

ART NO 4078228

Bib apron, 75 x 90 cm

Waist tie strap. Double pocket. Elasticated braces (art. no. 0568) purchased separately. Remove before washing.

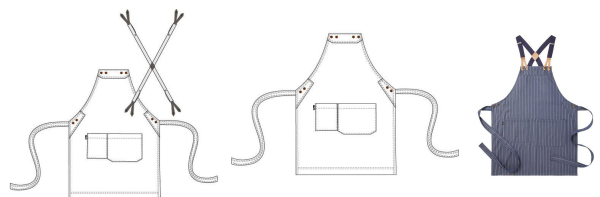
MATERIAL

65/35% polyester/cotton - Plain, yarn dyed stripe - 180g/m2

SIZES

one size

WASH



Jeans - 076

ART NO 4078237

Bib apron

Waist tie strap. Double pocket. Elasticated braces (art. no. 0568) purchased separately. Remove before washing.

• 75 x 90 cm

MATERIAL

65/35% polyester/cotton - Plain, yarn dyed stripe - 180g/m2

SIZES

one size

WASH





Marin - 002 Mörkgrå - 010 Svart - 015 Nougat - 022 Khaki grön - 026 Mörkröd - 043



Olivgrön - 086

ART NO 4078282

Bib apron

Waist tie strap. Double pocket.
Elasticated braces (art. no. 0568) purchased separately.
Remove before washing.

• 75 x 90 cm

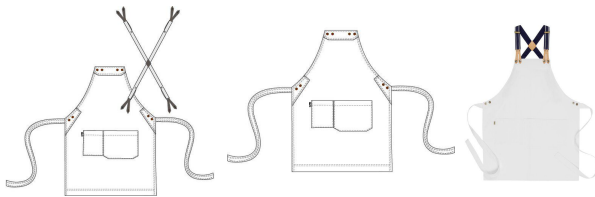
MATERIAL

65/35% polyester/cotton -
Canvas - 235g/m2

SIZES

one size

WASH



Vit - 000

ART NO 4078625

Bib apron, 75 x 90 cm

Waist tie strap. Double pocket.
Elasticated braces (art. no. 0568) purchased separately.
Remove before washing.

MATERIAL

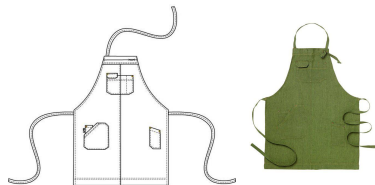
98/2% cotton/polyester T400
stretch - Twill - 260g/m2

SIZES

one size

WASH





Grön - 085

ART NO 4079764

Bib apron, 75 x 90 cm

Adjustable neck strap with buttonholes. Breast pocket, one part with flap, pen pocket, side pocket with inner pocket, pen pocket at lower left edge.

MATERIAL

50/50% linen/cotton - Plain, yarndyed - 210g/m2

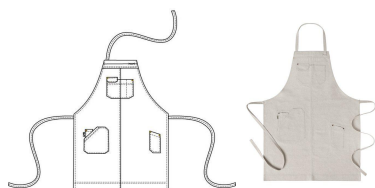
WASH



Shrinkage about 7% lengthwise

SIZES

one size



Beige - 023

ART NO 4079771

Bib apron

Adjustable neck strap with buttonholes. Breast pocket, one part with flap, pen pocket, side pocket with inner pocket, pen pocket at lower left edge.

• 75 x 90 cm

MATERIAL

55/45% linen/cotton - Plain, yarndyed - 240g/m2

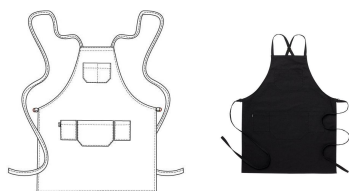
WASH



Shrinks about 10%

SIZES

one size



Svart - 015

ART NO 4082282

Bib apron

Long straps that are adjusted with D rings at the sides, can be both hanging loop/tie strap. Buckle on the back of the straps to hold them in place. Double breast pocket, three pockets at centre front.

• 75 x 90 cm

MATERIAL

65/35% polyester/cotton - Canvas - 235g/m2

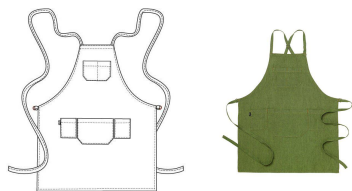
WASH



SIZES

one size





Grön - 085

ART NO 4082764

Bib apron

Long straps that are adjusted with D rings at the sides, can be both hanging loop/tie strap. Buckle on the back of the straps to hold them in place. Double breast pocket, three pockets at centre front.

• 75 x 90 cm

MATERIAL

50/50% linen/cotton - Plain, yarndyed - 210g/m2

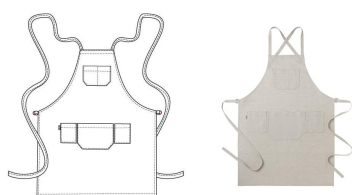
SIZES

one size

WASH



Shrinkage about 7% lengthwise



Beige - 023

ART NO 4082771

Bib apron

Long straps that are adjusted with D rings at the sides, can be both hanging loop/tie strap. Buckle on the back of the straps to hold them in place. Double breast pocket, three pockets at centre front.

• 75 x 90 cm

MATERIAL

55/45% linen/cotton - Plain, yarndyed - 240g/m2

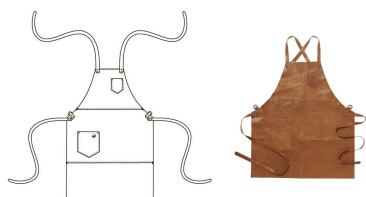
SIZES

one size

WASH



Shrinks about 10%



Brun - 028

ART NO 4086890

Bib apron

Braces adjusted with D rings at the sides. Breast pocket, side pocket. Side strap approx. 110 cm.

• 75 x 85 cm

MATERIAL

100% European goat leather, vegetable tanned. Swedish-made

SIZES

one size

WASH





Denimblå - 007 Svart - 015

ART NO 4087699

Bib apron

Adjustable neck strap with button/buttonholes. Breast pocket, side pockets with rivets. Loop for hanging.

- 80 x 90 cm

MATERIAL

100% cotton, denim. Garment washed. 340-360g/m2

SIZES

one size

WASH



Olivgrön - 086 Buteljgrön - 088

ART NO 4577201

Apron Supportive

Supportive is a cleancut apron with ergonomics in focus. It takes away pressure from the neck, and spreads it to the shoulders, thanks to the crossed back straps. It is tied to the waist.

- Ergonomic with crossed back straps
- Adjustable braces for ultimate comfort
- Side pocket with a key holder
- Comes in a variety of colours
- 75x90cm

MATERIAL

65/35% polyester/cotton - Twill - 210g/m2

SIZES

one size

WASH



Vit - 000 Svart - 015

ART NO 4577262

Apron Supportive, 75 x 90 cm

Supportive is a cleancut apron with ergonomics in focus. It takes away pressure from the neck, and spreads it to the shoulders, thanks to the crossed back straps. It is tied to the waist.

- Ergonomic with crossed back straps
- Adjustable braces for ultimate comfort
- Side pocket with a key holder
- In recycled polyester and BCI cotton
- 75x90cm

MATERIAL

45/20/35% virgin polyester /recycled polyester/BCI cotton - Twill - 210g/m2

SIZES

one size

WASH





Jeans - 076

ART NO 4577628

Apron Supportive

Supportive is a cleancut apron with ergonomics in focus. It takes away pressure from the neck, and spreads it to the shoulders, thanks to the crossed back straps. It is tied to the waist.

- Ergonomic with crossed back straps
- Adjustable braces for ultimate comfort
- Side pocket with a key holder
- 75x90cm

MATERIAL

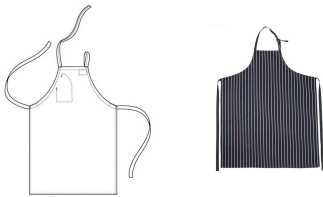
100% cotton - Denim - 220g /m2, (7,5 oz)

WASH



SIZES

one size



Marin rand - 008

ART NO 4334613

Bib apron

Inside pocket on the right side of the Bib apron. Adjustable fabric neck strap. Polyester herringbone belt at waist.

- 90 x 110 cm

MATERIAL

100% cotton - Twill, printed stripe - 255g/m2

WASH



Shrinkage approx. 5%.

SIZES

one size



Vit - 000

Marin - 002

Svart - 015

ART NO 4477201

Tabard

Pockets in longitudinal seams at the front. Fastened with buttons at left shoulder. Adjustable waist with pull tab/buttons. Loop for hanging. Length at centre back approx. 84 cm in size M/L.

MATERIAL

65/35% polyester/cotton - Twill - 210g/m2

WASH



SIZES

XS/S / M/L / XL/XXL





Ljusgrå - 011 Sand - 024 Orange - 033 Roströd - 038 Olivgrön - 086

ART NO 4574201

Bib apron

Adjustable neck strap with buttons. No pockets.

• 75 x 90 cm

MATERIAL

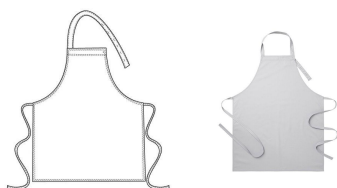
65/35% polyester/cotton - Twill - 210g/m2

WASH



SIZES

one size



Ljusgrå - 011

ART NO 4574245

Bib apron

Adjustable neck strap with buttons. No pockets.

• 75 x 90 cm

MATERIAL

50/50% TENCEL™ lyocell /polyester - Twill - 215g/m2

WASH



SIZES

one size



Vit - 000 Svart - 015

ART NO 4574261

Bib apron

Adjustable neck strap with buttons. No pockets.

• 75 x 90 cm

MATERIAL

50/50% TENCEL™ lyocell /polyester - Twill - 195g/m2

WASH



SIZES

one size





Vit - 000 Marin - 002 Grå - 014 Svart - 015 Brun - 028 Röd - 041

ART NO 4574280

Bib apron

Adjustable neck strap with buttons. No pockets.

• 75 x 90 cm

MATERIAL

65/35% polyester/cotton - Twill
- 245g/m2

SIZES

one size

WASH



Jeans - 076

ART NO 4574628

Bib apron

Adjustable neck strap with buttons. No pockets.

• 75 x 90 cm

MATERIAL

100% cotton - Denim - 220g
/m2, (7,5 oz)

SIZES

one size

WASH



Ljusgrå - 011 Sand - 024 Orange - 033 Roströd - 038 Olivgrön - 086 Buteljgrön - 088

ART NO 4579201

Bib apron

Adjustable neck strap with snap buttons. Pocket with bellows pleat on right side, key holder. Loop for hanging.

- Adjustable neck strap with snapp buttons
- Key holder
- Loop for hanging
- 70 x 100 cm

MATERIAL

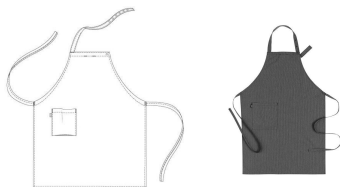
65/35% polyester/cotton - Twill
- 210g/m2

SIZES

one size

WASH





Svart rand - 018

ART NO 4579228

Bib apron

Adjustable neck strap with snap buttons. Pocket with bellows pleat on right side, key holder. Loop for hanging.

- Adjustable neck strap with snapp buttons
- Key holder
- Loop for hanging
- 70 x 100 cm

MATERIAL

65/35% polyester/cotton - Plain, yarn dyed stripe - 180g/m2

SIZES

one size

WASH



Midnattsblå - 078 Antracitgrå - 116

ART NO 4579229

Bib apron

Adjustable neck strap with snap buttons. Pocket with bellows pleat on right side, key holder. Loop for hanging.

- Adjustable neck strap with snapp buttons
- Key holder
- Loop for hanging
- 70 x 100 cm

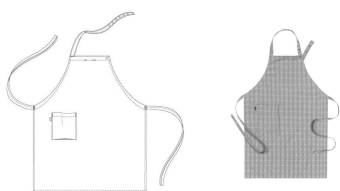
MATERIAL

65/35% polyester/cotton - Plain, yarn dyed stripe - 180g/m2

SIZES

one size

WASH



Svart rand - 018

ART NO 4579230

Bib apron, 70 x 100 cm

Adjustable neck strap with snap buttons. Pocket with bellows pleat on right side, key holder. Loop for hanging.

- Adjustable neck strap with snapp buttons
- Key holder
- Loop for hanging
- 70 x 100 cm

MATERIAL

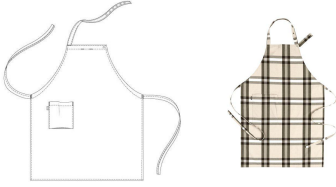
65/35% polyester/cotton - Plain, yarn dyed check - 180g/m2

SIZES

one size

WASH





Sand - 024

ART NO 4579231

Bib apron, 70 x 100 cm

Adjustable neck strap with snap buttons. Pocket with bellows pleat on right side, key holder. Loop for hanging.

- Adjustable neck strap with snap buttons
- Key holder
- Loop for hanging
- 70 x 100 cm

MATERIAL

65/35% polyester/cotton - Plain yarn dyed check - 180g/m2

WASH



SIZES

one size



Vit - 000

Marin - 002

Grå - 014

Svart - 015

Brun - 028

Röd - 041

ART NO 4579280

Bib apron, 70 x 100 cm

Adjustable neck strap with snap buttons. Pocket with bellows pleat on right side, key holder. Loop for hanging.

- Adjustable neck strap with snap buttons
- Key holder
- Loop for hanging
- 70 x 100 cm

MATERIAL

65/35% polyester/cotton - Twill - 245g/m2

WASH



SIZES

one size



Jeans - 076

ART NO 4579628

Bib apron

Adjustable neck strap with snap buttons. Pocket with bellows pleat on right side, key holder. Loop for hanging.

- Adjustable neck strap with snap buttons
- Key holder
- Loop for hanging
- 70 x 100 cm

MATERIAL

100% cotton - Denim - 220g/m2, (7,5 oz)

WASH



SIZES

one size



Svart - 015

ART NO 4667201

Sommelier apron

Adjustable neck strap with button. Pen pocket on bib, side pockets.

• 85 x 100 cm

MATERIAL

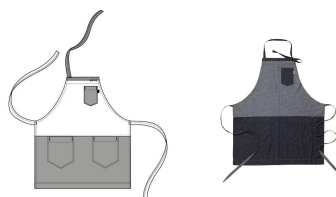
65/35% polyester/cotton - Twill
- 210g/m2

WASH



SIZES

one size



Jeans - 076

ART NO 4763628

Bib apron

Adjustable neck strap. Breast pocket, side pockets.

• 75 x 85 cm

MATERIAL

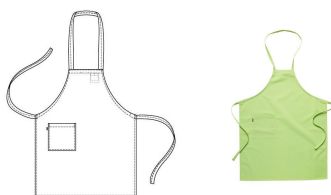
100% cotton - Denim - 220g
/m2, (7,5 oz)

WASH



SIZES

one size



Äpplegrön - 083

ART NO 4803201

Bib apron Child

Fixed neck strap. Sewn-on pocket on right side. S/M (approx. 60 x 65 cm), L/XL (approx. 70 x 90 cm). NOT recommended for children under 3 due to fixed length neck strap.

MATERIAL

65/35% polyester/cotton - Twill
- 210g/m2

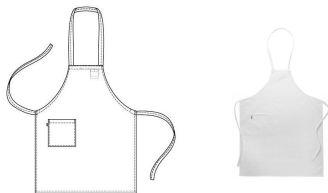
WASH



SIZES

S/M / L/XL





Vit - 000

ART NO 4803280

Bib apron Child

Fixed neck strap. Sewn-on pocket on right side. CL 100 /120 (approx. 60 x 65 cm), 130 /150 (approx. 70 x 90 cm). NOT recommended for children under 3 due to fixed length neck strap.

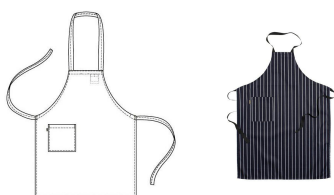
MATERIAL

65/35% polyester/cotton - Twill
- 245g/m2

SIZES

S/M / L/XL

WASH



Marin rand - 008

ART NO 4803613

Bib apron Child

Fixed neck strap. Sewn-on pocket on right side. CL 100 /120 (approx. 60 x 65 cm), 130 /150 (approx. 70 x 90 cm). NOT recommended for children under 3 due to fixed length neck strap.

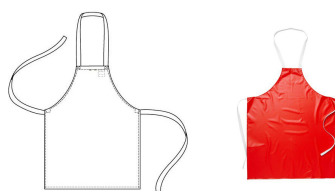
MATERIAL

100% cotton - Twill, printed stripe - 255g/m2

SIZES

S/M / L/XL

WASH



Röd - 041

ART NO 4806617

Bib apron Child

Fixed neck strap. S/M (approx. 60 x 65 cm), L/XL (approx. 70 x 90 cm). NOT recommended for children under 3 due to fixed length neck strap.

MATERIAL

Plastic - 300g/m2

SIZES

S/M / L/XL

WASH





Vit - 000 Marin - 002 Svart - 015

ART NO 5986280

Bib apron

Adjustable fabric neck strap.
Pocket on right side with
bellows pleat, key holder. Loop
for hanging. Polyester
herringbone belt at waist.

• 75 x 95 cm

MATERIAL

65/35% polyester/cotton - Twill
- 245g/m2

WASH



SIZES

one size





TOWELS



Blå rand - 068

ART NO 1800699

Hand towel, 50 x 70 cm

Suitable as a chef's side towel.
6-pack.**MATERIAL**100% cotton, approx 285 g/m²**SIZES**

one size

WASH

Röd rand - 048 Blå rand - 068

ART NO 1802799

Hand towel, 50 x 70 cm

Two loops. 6-pack.

MATERIAL50/50% linen/cotton, approx.
300g/m²**SIZES**

one size

WASH

Röd rand - 048

ART NO 1803799

Hand towel, 50 x 70 cm

Two loops. 6-pack.

MATERIAL50/50% linen/cotton, approx.
170g/m²**SIZES**

one size

WASH



Blå ruta - 069

ART NO 1806699

Hand towel, 50 x 70 cm

6-pack.

MATERIAL

100% cotton, approx. 190g/m²

SIZES

one size

WASH



Blå - 005

ART NO 1807699

Hand towel, 50 x 80 cm

6-pack.

MATERIAL

100% cotton, approx. 270g/m²

SIZES

6-PACK

WASH



Svart - 015

ART NO 1810699

Hand towel, 50 x 80 cm

6-pack.

MATERIAL

100% cotton, approx. 220g/m²

SIZES

one size

WASH





Blå rand - 068

ART NO 1819799

Chef's side towel, 50 x 90 cm

Extra long side towel. 6 pack

MATERIAL

50/50% linen/cotton, approx.
280g/m²

SIZES

one size

WASH







Vit - 000 Marin - 002 Ljusgrå - 011 Grå - 014 Svart - 015 Brun - 028 Orange - 033 Roströd - 038 Röd - 041



Olivgrön - 086

ART NO 1706201

Cap

Elasticated back. S/M (approx. 54-58 cm), L/XL (approx. 59-63 cm).

MATERIAL

65/35% polyester/cotton - Twill
- 210g/m2

WASH



SIZES

S/M / L/XL



Pepita svart - 019

ART NO 1706203

Cap

Elasticated back. S/M (approx. 54-58 cm), L/XL (approx. 59-63 cm).

MATERIAL

52/48% cotton/polyester -
Pepita, yarn dyed check - 245g
/m2

WASH



SIZES

S/M / L/XL





Svart rand - 018

ART NO 1706228

Cap

Elasticated back. S/M (approx. 54-58 cm), L/XL (approx. 59-63 cm).

MATERIAL

65/35% polyester/cotton - Plain, yarn dyed stripe - 180g/m2

WASH



SIZES

S/M / L/XL



Midnattsblå - 078 Antracitgrå - 116

ART NO 1706229

Cap

Elasticated back. S/M (approx. 54-58 cm), L/XL (approx. 59-63 cm).

MATERIAL

65/35% polyester/cotton - Plain, yarn dyed stripe - 180g/m2

WASH



SIZES

S/M / L/XL



Svart rand - 018

ART NO 1706230

Cap

Elasticated back. S/M (approx. 54-58 cm), L/XL (approx. 59-63 cm).

MATERIAL

65/35% polyester/cotton - Plain, yarn dyed check - 180g/m2

WASH



SIZES

L/XL





Jeans - 076

ART NO 1706237

Cap

Elasticated back. S/M (approx. 54-58 cm), L/XL (approx. 59-63 cm).

MATERIAL

65/35% polyester/cotton - Plain, yarn dyed stripe - 180g/m2

SIZES

S/M / L/XL

WASH



Jeans - 076

ART NO 1706628

Cap

Elasticated back. S/M (approx. 54-58 cm), L/XL (approx. 59-63 cm).

MATERIAL

100% cotton - Denim - 220g /m2, (7,5 oz)

SIZES

S/M / L/XL

WASH



Svart - 015

ART NO 1708280

Hat

Elasticated back.

MATERIAL

65/35% polyester/cotton - Twill - 245g/m2

SIZES

one size

WASH





Vit - 000

ART NO 1709201

Mesh Cap

Adjustable with elastic.

MATERIAL

65/35% polyester/cotton - Twill
- 210g/m2

WASH



SIZES

one size



Vit - 000

ART NO 1713999

Chef's Hat

Tall model, approx. 30 cm.
Open at top. Adjustable size.

MATERIAL

Non Woven - 100%
biodegradable fibre, cellulose
/viscose, unbleached

WASH



SIZES

one size



Vit - 000 Svart - 015

ART NO 1720201

Chef's Hat

Adjustable with Velcro.

MATERIAL

65/35% polyester/cotton - Twill
- 210g/m2

WASH



SIZES

one size





Svart - 015

ART NO 1721699

Cap

Adjustable with metal buckle.
Model with vents.

MATERIAL

100% cotton

SIZES

one size

WASH



Vit - 000 Marin - 002 Svart - 015

ART NO 1723257

Mesh Cap

Adjustable with drawstring
/stoppers. Mesh top.

MATERIAL

50/50% cotton/polyester - Plain,
domestik - 180g/m2

SIZES

one size

WASH



Vit - 000 Marin - 002 Svart - 015

ART NO 1724201

Cap

Fold-up brim. Mesh vents. S
(approx. 54 cm), M (approx. 57
cm), L (approx. 60 cm), XL
(approx. 63 cm).

MATERIAL

65/35% polyester/cotton - Twill
- 210g/m2

SIZES

S / M / L / XL

WASH





Vit - 000 Svart - 015

ART NO 1909257

Kerchief

Ties at the neck.

MATERIAL

50/50% cotton/polyester - Plain, domestik - 180g/m2

WASH



SIZES

one size



Svart - 015

ART NO 0570499

Hijab

Shaped with four panels for best fit. Supportive band inside at back. Total length from mid front to bottom edge at back approx. 66 cm.

- Washable at 60 ° C
- Material with good air permeability
- Supportive band on the inside for extra good fit

MATERIAL

90/10% polyester/Spandex-mesh, 180g/m2

WASH



SIZES

one size



Vit - 000 Svart - 015

ART NO 0563262

Hat

Elastic back, opening for ponytail. S/M (approx. 54-58 cm), L/XL (approx. 59-63 cm).

MATERIAL

45/20/35% virgin polyester /recycled polyester/BCI cotton - Twill - 210g/m2

WASH



SIZES

S/M / L/XL





Vit - 000 Svart - 015

ART NO 0571299

Bandana

Ties at the neck.

MATERIAL

97/3% polyester/cotton

SIZES

one size

WASH



Vit - 000 Svart - 015

ART NO 0561257

Kerchief

96 x 56 cm.

MATERIAL

50/50% cotton/polyester - Plain, domestik - 180g/m2

SIZES

one size

WASH



Vit - 000 Svart - 015

ART NO 0562257

Cap with mesh bag

Adjustable with drawstring /stoppers. Mesh top/bag.

MATERIAL

50/50% cotton/polyester - Plain, domestik - 180g/m2

SIZES

one size

WASH





Svart - 015 Nougat - 022 Olivgrön - 086

ART NO 0564282

Cap

Elasticated back. S/M (ca 54-60 cm), L/XL (ca 58-64 cm)

MATERIAL

65/35% polyester/cotton - Canvas - 235g/m2

WASH



SIZES

S/M / L/XL



Marin rand - 008

ART NO 0564613

Cap

Elasticated back. S/M (ca 54-60 cm), L/XL (ca 58-64 cm)

MATERIAL

100% cotton - Twill, printed stripe - 255g/m2

WASH



SIZES

S/M / L/XL



Jeans - 076

ART NO 0564628

Cap

Elasticated back. S/M (ca 54-60 cm), L/XL (ca 58-64 cm)

MATERIAL

100% cotton - Denim - 220g /m2, (7,5 oz) Tvätt 60°C. Tvätt före användning rekommenderas.

WASH



SIZES

S/M / L/XL



Vit - 000 Svart - 015

ART NO 0575406

Mesh hat

Mesh crown, ribbed tricot edging.

MATERIAL

Ribbing 95% cotton/5% elastane. Mesh 100% polyester 55g/m2

SIZES

one size

WASH





ACCESSORIES



Vit - 000 Marin - 002 Blå - 005 Svart - 015 Brandgul - 032 Röd - 041 Äpplegrön - 083 Guld passpoal - 106

ART NO 1000199

Stud buttons

For chef's jackets. Must be removed from garment before washing.

MATERIAL

Plastic

WASH

SIZES

one size



Silver - 103 Mässing - 105

ART NO 1001199

Metal buttons with clips

5 per pack. For waiter jackets 1010/1015, 1200/1300. Remove from garment before washing!

MATERIAL

Metal

WASH

SIZES

one size



Svart/Guld - 100 Svart/Silver - 101 Guld passpoal - 106

ART NO 1101999

Epaulettes, pair

For waiter jackets 1200/1300. Fastened with button. Must be removed from garment before washing.

MATERIAL

Braided ribbon

WASH

SIZES

one size



Svart - 015

ART NO 1310999

Bowtie

Pre-tied. Adjustable.

MATERIAL

100% polyester

WASH

SIZES

one size



Svart - 015

ART NO 1311999

Tie

8 x 150 cm.

MATERIAL

100% polyester

SIZES

one size

WASH



Svart - 015

ART NO 1881999

Purse

Loop on the back.

MATERIAL

Calf leather

SIZES

one size

WASH



Marin - 002 Marin rand - 008 Svart - 015 Brun - 028 Mörkröd - 043

ART NO 0568499

Elasticated braces

Adjustable, fastened with leather straps/metal buttons. S /M (approx. 54-80 cm), L/XL (approx. 68-108 cm). Remove before washing. Suitable for apron 4078.

MATERIAL

Elastic / Leather

SIZES

S/M / L/XL

WASH





Brun - 028

ART NO 0565890

Set of leather accessories

Pocket + adjustable braces, both fastened with metal buttons, braces also available with snap hooks.

MATERIAL

100% European goat leather, vegetable tanned. Swedish-made

SIZES

S/M / L/XL

WASH



Brun - 028

ART NO 0566890

Set of leather straps

Leather straps, two waist straps, a neck strap, are attached with metal buttons. Neck strap adjustable with D rings. For bib apron, art. no. 4077.

MATERIAL

100% European goat leather, vegetable tanned. Swedish-made

SIZES

one size

WASH



Brun - 028

ART NO 0566892

Set of leather straps

Leather straps, two waist straps, a neck strap, are attached with metal buttons. Neck strap adjustable with D rings. For bib apron, art. no. 4077.

MATERIAL

100% sheepskin

SIZES

one size

WASH





Brun - 028

ART NO 0567890

Leather straps

Two leather straps, fastened with metal buttons. For waist apron, art. no. 4060.

MATERIAL

100% European goat leather, vegetable tanned. Swedish-made

SIZES

one size

WASH



Brun - 028

ART NO 0567892

Leather straps

Two leather straps, fastened with metal buttons. For waist apron, art. no. 4060.

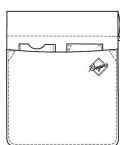
MATERIAL

100% sheepskin

SIZES

one size

WASH



Brun - 028

ART NO 0569890

Pocket, 22 x 28 cm

Channel, approx. 5 cm, for threading onto a waistband or belt (purchased separately). Inside pockets for telephone, pens, etc.

MATERIAL

100% European goat leather, vegetable tanned. Swedish-made

SIZES

one size

WASH





Beige - 023

ART NO 0573999

Belt

Brown leather details. Width 3.5 cm.

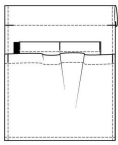
MATERIAL

Braided elastic / Leather

SIZES

one size

WASH



Jeans - 076

ART NO 0574278

Pocket, 22 x 28 cm

Channel, approx. 5 cm, for threading onto a waistband or belt (purchased separately). Inside pockets for telephone, pens, etc.

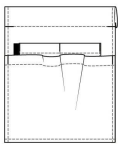
MATERIAL

55/45% cotton/polyester - Twill, Denim look a like - 360g/m2

SIZES

one size

WASH



Svart - 015

ART NO 0574282

Pocket, 22 x 28 cm

Channel, approx. 5 cm, for threading onto a waistband or belt (purchased separately). Inside pockets for telephone, pens, etc.

MATERIAL

65/35% polyester/cotton - Canvas - 235g/m2

SIZES

one size

WASH





CHEF SHIRTS SHORT SLEEVE



Vit - 000 Marin - 002 Ljusgrå - 011 Svart - 015 Plommon - 045

ART NO 1002257

Chef's jacket, Women's

Concealed snap buttons. Bust dart. Short sleeves with double pen pocket on left. Hanging loop in collar.

MATERIAL

50/50% cotton/polyester - Plain, domestik - 180g/m2

SIZES

XS / S / M / L / XL / XXL / 3XL /

WASH



Vit - 000 Svart - 015

ART NO 1003201

Chef's jacket, Men's

Concealed snap buttons. Double pen pocket on the left sleeve, raglan cut. Longitudinal seams front/back. Hanging loop in collar.

MATERIAL

65/35% polyester/cotton - Twill - 210g/m2

SIZES

C44 / C46 / C48 / C50 / C52 / C54 / C56 / C58 / C60 / C62 / C64 /

WASH



Marin - 002 Mörkgrå - 010 Olivgrön - 086

ART NO 1006272

Chef's shirt Action, Unisex

Action is an airy unisex Chef's shirt, inspired by the world of sports. Thanks to the hidden mesh part in the back and the thin Stretchy fabric, the shirt gets an airy and cool effect. The design is minimalistic with hidden buttons and a pocket.

- Mesh in the back for an "aircon" effect
- Comfortable with thin fabric with Stretch
- Hidden snap buttons and pocket
- Minimalistic without losing functionality
- Short sleeves
- Comes in a variety of colours

MATERIAL

50/26/24% polyester/cotton /polyester-stretch, poplin. 120g /m²

SIZES

XXS / XS / S / M / L / XL / XXL / 3XL /

WASH





Marin - 002 Ljusgrå - 011 Grå - 014 Roströd - 038 Röd - 041 Olivgrön - 086

ART NO 1012201

Chef's shirt, Women's

Slim fit. Concealed snap buttons. Yoke front. Longitudinal seams front/back. Double pen pocket left sleeve. Hanging loop in collar.

MATERIAL

65/35% polyester/cotton - Twill - 210g/m2

SIZES

C34 / C36 / C38 / C40 / C42 / C44 / C46 / C48 / C50 / C52 / C54 /

WASH



Marin - 002 Ljusgrå - 011 Grå - 014 Roströd - 038 Röd - 041 Olivgrön - 086

ART NO 1017201

Chef's shirt, Men's

Slim fit. Concealed snap buttons. Yoke front. Longitudinal seams front/back. Double pen pocket left sleeve. Hanging loop in collar.

MATERIAL

65/35% polyester/cotton - Twill - 210g/m2

SIZES

C44 / C46 / C48 / C50 / C52 / C54 / C56 / C58 / C60 / C62 / C64 / C66 /

WASH



Vit - 000 Svart - 015

ART NO 1021261

Chef's shirt, Men's

Slim fit. Piping around the collar. Hanging loop in collar. Fabric-covered buttons. Slits in the sides. Yoke front. Longitudinal seams front/back.

MATERIAL

50/50% TENCEL™ lyocell /polyester - Twill - 195g/m2

SIZES

C44 / C46 / C48 / C50 / C52 / C54 / C56 / C58 / C60 / C64 /

WASH





Vit - 000 Svart - 015

ART NO 1022261

Chef's shirt, Women's

Slim fit. Piping around the collar. Hanging loop in collar. Fabric-covered buttons. Slits in the sides. Yoke front. Longitudinal seams front/back.

MATERIAL

50/50% TENCEL™ lyocell /polyester - Twill - 195g/m2

SIZES

C34 / C36 / C38 / C40 / C42 / C44 / C46 / C48 / C50 /

WASH



Vit - 000

ART NO 1023261

Chef's shirt, Men's

Slim fit. Concealed snap buttons. One button visible at collar, remove before washing. Breast pocket. Sleeves with slits. Yoke, longitudinal seams front/back. Rounded hem, long at the back. Loop on outside of collar for apron ties. Hanging loop in collar. Piping in collar, yoke, sleeve.

MATERIAL

50/50% TENCEL™ lyocell /polyester - Twill - 195g/m2

SIZES

C44 / C46 / C48 / C50 / C52 / C54 / C56 / C58 / C60 /

WASH



Vit - 000

ART NO 1024261

Chef's shirt, Women's

Slim fit. Concealed snap buttons. One button visible at collar, remove before washing. Breast pocket. Sleeves with slits. Yoke, longitudinal seams front/back. Rounded hem, long at the back. Loop on outside of collar for apron ties. Hanging loop in collar. Piping in collar, yoke, sleeve.

MATERIAL

50/50% TENCEL™ lyocell /polyester - Twill - 195g/m2

SIZES

C34 / C36 / C38 / C40 / C42 / C44 / C46 / C48 / C50 /

WASH





Svart/vit - 915

ART NO 1029650

Chef's jacket, Men's

French cut. Tapered closure.
Piping around the collar, front edge, cuffs. Hand-sewn, fabric buttons that can withstand mangling. Seams at the back. Hanging loop in collar.

MATERIAL

100% cotton - Batavia - 190g /m2

WASH



SIZES

C44 / C46 / C48 / C50 / C52 / C54 / C56 / C58 / C60 / C62 / C64 /



Vit - 000

ART NO 1033650

Chef's shirt, Men's

Slim fit. Concealed snap buttons. Breast pocket. White piping on yoke front/back, on sleeves. Slits in the sides. Longitudinal seams front/back. White double stitching. Hanging loop in collar.

MATERIAL

100% cotton - Batavia - 190g /m2

WASH



SIZES

C44 / C46 / C48 / C50 / C52 / C54 / C56 / C58 / C60 / C62 /



Vit - 000

ART NO 1034650

chef's shirt, women's

Slim fit. Concealed snap buttons. Breast pocket. White piping on yoke front/back, on sleeves. Slits in the sides. Longitudinal seams front/back. White double stitching. Hanging loop in collar

MATERIAL

100% cotton - Batavia - 190g /m2

WASH



SIZES

C34 / C36 / C38 / C40 / C42 / C44 / C46 / C48 / C50 /





Vit - 000 Svart - 015

ART NO 1053201

Chef's shirt, Men's

Slim fit. Concealed snap buttons. Yoke, longitudinal seams front/back. Hanging loop in collar. Sizes C146-154 have about 5 cm longer sleeves and torso.

MATERIAL

65/35% polyester/cotton - Twill
- 210g/m2

WASH



SIZES

C40 / C42 / C44 / C46 / C48 / C50 /
C52 / C54 / C56 / C58 / C60 / C62 /
C64 / C66 / C68 / C70 / C146 / C148 /
C150 / C152 / C154 /



Vit - 000 Svart - 015

ART NO 1056201

Chef's shirt, Women's

Slim fit. Concealed snap buttons. Yoke, longitudinal seams front/back. Hanging loop in collar.

MATERIAL

65/35% polyester/cotton - Twill
- 210g/m2

WASH



SIZES

C32 / C34 / C36 / C38 / C40 / C42 /
C44 / C46 / C48 / C50 / C52 / C54 /
C56 /



Vit - 000

ART NO 1069250

Chef's jacket, Men's

Short sleeve. Concealed, slim fit closure with snap buttons. Two hand-sewn, fabric buttons that can withstand mangling. Loop at the back of collar for apron ties. Hanging loop in collar.

MATERIAL

60/40% cotton/polyester - Satin
- 200g/m2

WASH



SIZES

C44 / C46 / C48 / C50 / C52 / C54 /
C56 / C58 / C60 /





Svart - 015

ART NO 1069271

Chef's jacket stretch, Men's

Short sleeve. Concealed, slim fit closure with snap buttons. Two hand-sewn, fabric buttons that can withstand mangling. Loop at the back of collar for apron ties. Hanging loop in collar.

MATERIAL

57/40/3% cotton/polyester/XLA stretch - Satin - 225g/m2

WASH



SIZES

C44 / C46 / C48 / C50 / C52 / C54 / C56 / C58 / C60 /



Jeans - 076

ART NO 1071628

Chef's jacket, Men's

Classic straight cut with seams at the back. Concealed snap buttons. Loop outside back of collar for apron ties. Hanging loop in collar.

MATERIAL

100% cotton - Denim - 220g /m2, (7,5 oz)

WASH



Garment washed

SIZES

C40 / C42 / C44 / C46 / C48 / C50 / C52 / C54 / C56 / C58 / C60 / C62 / C64 /



Blå - 005

ART NO 1087769

Shirt Men's

Slim fit. Concealed snap buttons. Breast pocket, sleeve pocket. Hanging loop in collar. Slits in the sides. Yoke, longitudinal seams at the back. Slightly rounded hem at the back.

MATERIAL

53/47% cotton/linen - Plain, yarndyed - 194g/m2

WASH



Shrinks about 6%

SIZES

C46 / C48 / C50 / C52 / C54 / C56 / C58 / C60 / C62 /





Vit - 000 Svart - 015

ART NO 1501262

Atacac Chef's shirt 3/4-sleeve stretch effect, Unisex

Straight cut with seams at the back. Concealed snap buttons. Diagonally cut (on the bias), gives a stretch effect to the garment. Hanging loop in collar.

MATERIAL

45/20/35% virgin polyester /recycled polyester/BCI cotton - Twill - 210g/m2

SIZES

XXS / XS / S / M / L / XL / XXL / 3XL /



WASH



Vit - 000 Svart - 015

ART NO 1601201

Chef's jacket, Men's

Straight cut with seams at the back. Removable stud buttons included. White has white, black has black. Hanging loop in the collar.

MATERIAL

65/35% polyester/cotton - Twill - 210g/m2

SIZES

C42 / C44 / C46 / C48 / C50 / C52 / C54 / C56 / C58 / C60 / C62 / C64 / C66 / C68 /



WASH



Vit - 000 Svart - 015

ART NO 1602201

Chef's jacket, Women's

Classic cut, with bust darts, slightly waisted. Concealed snap buttons. Seams at the back. Hanging loop in collar

MATERIAL

65/35% polyester/cotton - Twill - 210g/m2

SIZES

C32 / C34 / C36 / C38 / C40 / C42 / C44 / C46 / C48 / C50 / C52 /



WASH





Vit - 000 Svart - 015

ART NO 1605201

Chef's jacket, Men's

Straight cut with seams at the back. Concealed snap buttons. Hanging loop in collar.

MATERIAL

65/35% polyester/cotton - Twill
- 210g/m2

WASH



SIZES

C42 / C44 / C46 / C48 / C50 / C52 /
C54 / C56 / C58 / C60 / C62 / C64 /
C66 / C68 /



Vit - 000 Svart - 015

ART NO 1606201

Chef's jacket, Women's

Classic cut, with bust darts, slightly waisted. Removable stud buttons included. White has white, black has black. Seams at the back. Hanging loop in collar.

MATERIAL

65/35% polyester/cotton - Twill
- 210g/m2

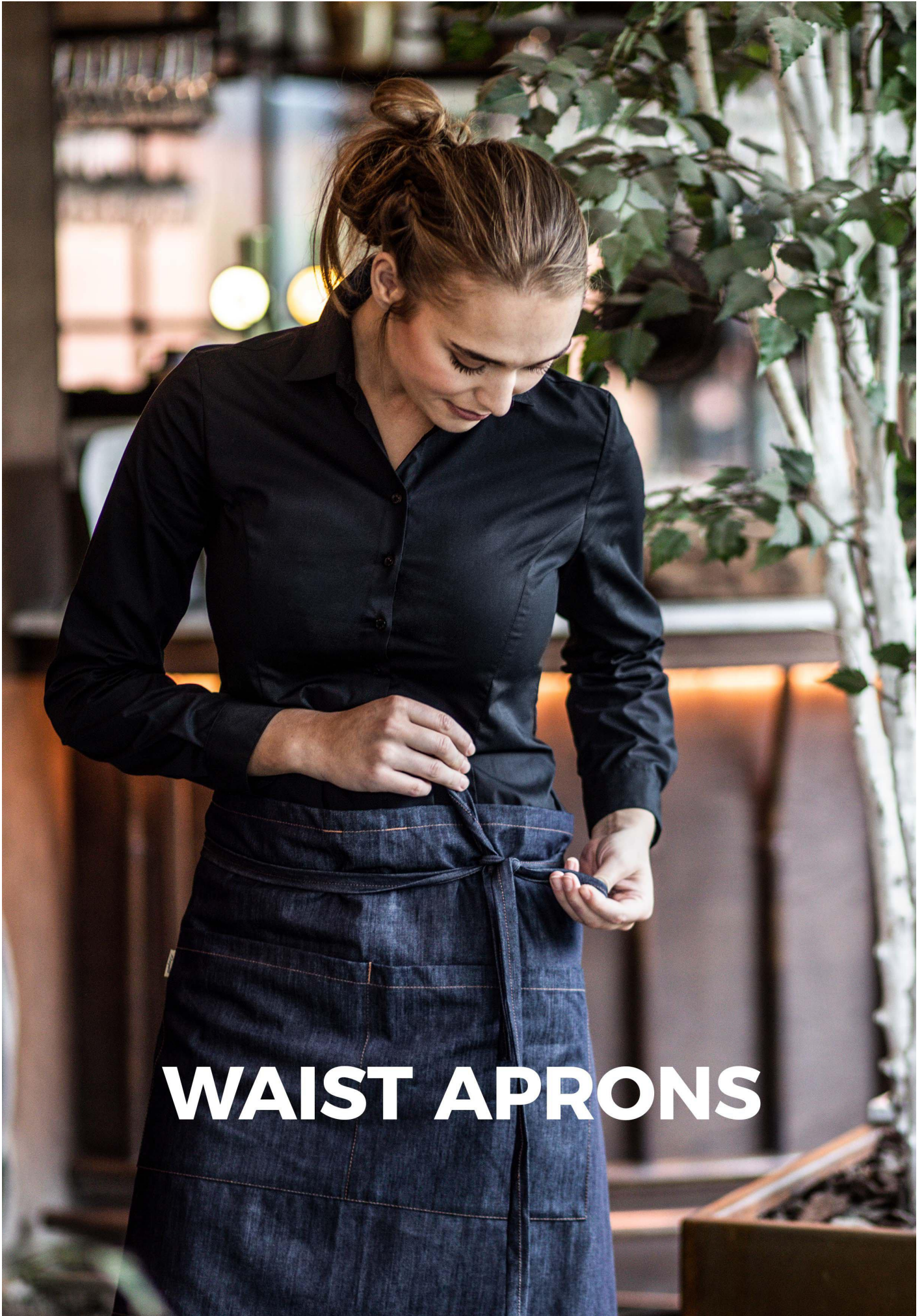
WASH



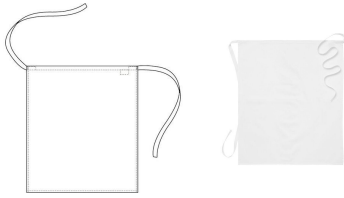
SIZES

C32 / C34 / C36 / C38 / C40 / C42 /
C44 / C46 / C48 / C50 / C52 / C54 /





WAIST APRONS



Vit - 000

ART NO 1445651

Waist apron

Models without pockets.
Polyester herringbone belt.

• 75 x 85 cm

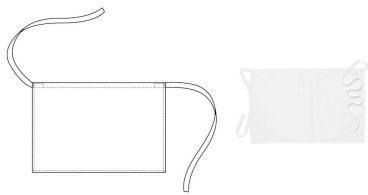
MATERIAL

100% cotton - Satin - 240g/m2

SIZES

one size

WASH



Vit - 000

ART NO 1446651

Waist apron

Models without pockets.
Polyester herringbone belt.

• 75 x 50 cm

MATERIAL

100% cotton - Satin - 240g/m2

SIZES

one size

WASH



Vit - 000

ART NO 1449651

Waist apron

Models without pockets.
Polyester herringbone belt.

• 95 x 100 cm

MATERIAL

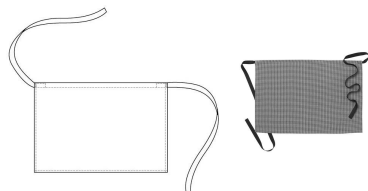
100% cotton - Satin - 240g/m2

SIZES

one size

WASH





Pepita svart - 019

ART NO 2146203

Waist apron

Models without pockets.
Polyester herringbone belt.

• 75 x 50 cm

MATERIAL

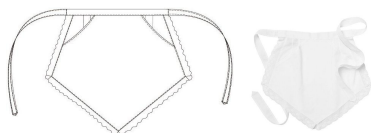
52/48% cotton/polyester -
Pepita, yarn dyed check - 245g
/m2

SIZES

one size



WASH



Vit - 000

ART NO 2448257

Waist apron

Retro classic with lace. Front
pocket with opening on both
sides.

• 32 x 40 cm

MATERIAL

50/50% cotton/polyester - Plain,
domestik - 180g/m2

SIZES

one size

WASH



Ljusgrå - 011 Sand - 024 Orange - 033 Roströd - 038 Olivgrön - 086

ART NO 2545201

Waist apron

Pocket on right side with
bellows pleat, key holder. Loop
for hanging.

• 100 x 85 cm

MATERIAL

65/35% polyester/cotton - Twill
- 210g/m2

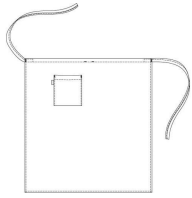
SIZES

one size



WASH





Vit - 000 Marin - 002 Grå - 014 Svart - 015 Brun - 028 Röd - 041

ART NO 2545280

Waist apron

Pocket on right side with bellows pleat, key holder. Loop for hanging.

• 100 x 85 cm

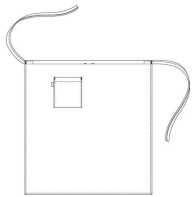
MATERIAL

65/35% polyester/cotton - Twill - 245g/m2

SIZES

one size

WASH



Jeans - 076

ART NO 2545628

Waist apron

Pocket on right side with bellows pleat, key holder. Loop for hanging.

• 100 x 85 cm

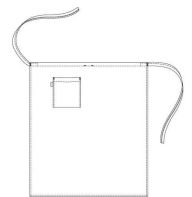
MATERIAL

100% cotton - Denim - 220g /m2, (7,5 oz)

SIZES

one size

WASH



Ljusgrå - 011 Sand - 024 Orange - 033 Roströd - 038 Olivgrön - 086 Buteljgrön - 088

ART NO 2645201

Waist apron

Pocket on right side with bellows pleat, key holder. Loop for hanging.

• 75 x 85 cm

MATERIAL

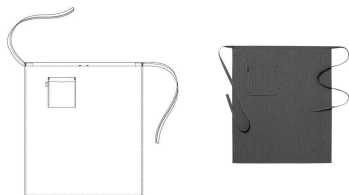
65/35% polyester/cotton - Twill - 210g/m2

SIZES

one size

WASH





Svart rand - 018

ART NO 2645228

Waist apron

Pocket on right side with bellows pleat, key holder. Loop for hanging.

• 75 x 85 cm

MATERIAL

65/35% polyester/cotton - Plain, yarn dyed stripe - 180g/m2

WASH



SIZES

one size



Midnattsblå - 078 Antracitgrå - 116

ART NO 2645229

Waist apron

Pocket on right side with bellows pleat, key holder. Loop for hanging.

• 75 x 85 cm

MATERIAL

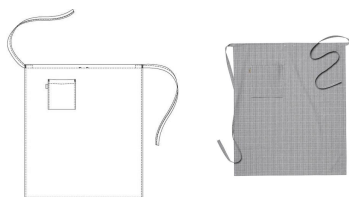
65/35% polyester/cotton - Plain, yarn dyed stripe - 180g/m2

WASH



SIZES

one size



Svart rand - 018

ART NO 2645230

Waist apron

Pocket on right side with bellows pleat, key holder. Loop for hanging.

• 75 x 85 cm

MATERIAL

65/35% polyester/cotton - Plain, yarn dyed check - 180g/m2

WASH



SIZES

one size





Sand - 024

ART NO 2645231

Waist apron

Pocket on right side with bellows pleat, key holder. Loop for hanging.

• 75 x 85 cm

MATERIAL

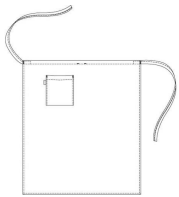
65/35% polyester/cotton - Plain yarn dyed check - 180g/m2

WASH



SIZES

one size



Vit - 000



Marin - 002



Grå - 014



Svart - 015



Brun - 028



Röd - 041

ART NO 2645280

Waist apron

Pocket on right side with bellows pleat, key holder. Loop for hanging.

• 75 x 85 cm

MATERIAL

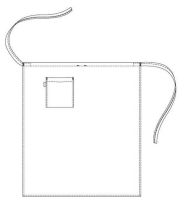
65/35% polyester/cotton - Twill - 245g/m2

WASH



SIZES

one size



Jeans - 076

ART NO 2645628

Waist apron

Pocket on right side with bellows pleat, key holder. Loop for hanging.

• 75 x 85 cm

MATERIAL

100% cotton - Denim - 220g/m2, (7,5 oz)

WASH



SIZES

one size



Ljusgrå - 011 Sand - 024 Orange - 033 Roströd - 038 Olivgrön - 086

ART NO 2745201

Waist apron

Slit at centre front. Pocket on right side with bellows pleat, key holder. Loop for hanging.

• 100 x 85 cm

MATERIAL

65/35% polyester/cotton - Twill
- 210g/m2

SIZES

one size

WASH



Vit - 000 Marin - 002 Grå - 014 Svart - 015 Brun - 028 Röd - 041

ART NO 2745280

Waist apron

Slit at centre front. Pocket on right side with bellows pleat, key holder. Loop for hanging.

• 100 x 85 cm

MATERIAL

65/35% polyester/cotton - Twill
- 245g/m2

SIZES

one size

WASH



Jeans - 076

ART NO 2745628

Waist apron

Slit at centre front. Pocket on right side with bellows pleat, key holder. Loop for hanging.

• 100 x 85 cm

MATERIAL

100% cotton - Denim - 220g
/m2, (7,5 oz)

SIZES

one size

WASH





Svart - 015

ART NO 3445615

Waist apron

Models without pockets.
Polyester herringbone belt.

• 75 x 85 cm

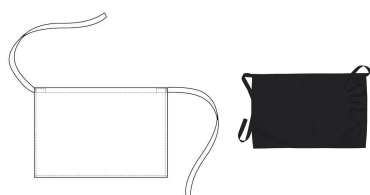
MATERIAL

100% cotton - Twill - 245g/m2

SIZES

one size

WASH



Svart - 015

ART NO 3446615

Waist apron

Models without pockets.
Polyester herringbone belt.

• 75 x 50 cm

MATERIAL

100% cotton - Twill - 245g/m2

SIZES

one size

WASH



Svart - 015

ART NO 3449615

Waist apron

Models without pockets.
Polyester herringbone belt.

• 95 x 100 cm

MATERIAL

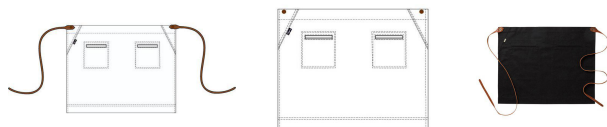
100% cotton - Twill - 245g/m2

SIZES

one size

WASH





Svart - 015

ART NO 4060282

Waist apron

Side pockets. Metal buttons.
Leather straps (art. no. 0567)
purchased separately. Remove
before washing.

• 75 x 56 cm

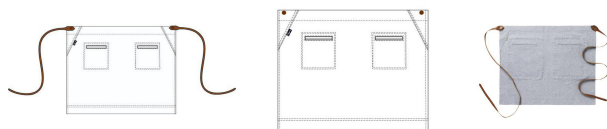
MATERIAL

65/35% polyester/cotton -
Canvas - 235g/m2

SIZES

one size

WASH



Blå - 005

ART NO 4060769

Waist apron

Side pockets. Metal buttons.
Leather straps (art. no. 0567)
purchased separately. Remove
before washing.

• 75 x 56 cm

MATERIAL

53/47% cotton/linen - Plain,
yarndyed - 194g/m2

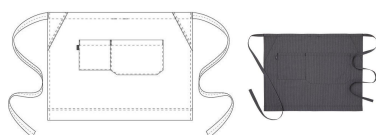
SIZES

one size

WASH



Shrinkage about 6%
lengthwise



Svart rand - 018

ART NO 4061228

Waist apron, 75 x 56 cm

Double pouch pocket.

• 75 x 56 cm

MATERIAL

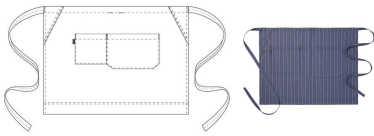
65/35% polyester/cotton - Plain,
yarn dyed stripe - 180g/m2

SIZES

one size

WASH





Jeans - 076

ART NO 4061237

Waist apron

Double pouch pocket.

• 75 x 56 cm

MATERIAL

65/35% polyester/cotton - Plain, yarn dyed stripe - 180g/m2

WASH



SIZES

one size



Marin - 002 Mörkgrå - 010 Svart - 015 Nougat - 022 Khaki grön - 026 Mörkröd - 043 Olivgrön - 086

ART NO 4061282

Waist apron

Double pouch pocket.

• 75 x 56 cm

MATERIAL

65/35% polyester/cotton - Canvas - 235g/m2

WASH



SIZES

one size



Grön - 085

ART NO 4062764

Waist apron

Side pocket with inner pocket.

• 75 x 56 cm

MATERIAL

50/50% linen/cotton - Plain, yarndyed - 210g/m2

WASH



Shrinkage about 7% lengthwise

SIZES

one size





Beige - 023

ART NO 4062771

Waist apron

Side pocket with inner pocket. • 75 x 56 cm

MATERIAL

55/45% linen/cotton - Plain, yarn dyed - 240g/m2

WASH



Shrinks about 10%

SIZES

one size



Brun - 028

ART NO 4084890

Waist apron

Side pocket. Side strap approx. 110 cm. • 75 x 48 cm

MATERIAL

100% European goat leather, vegetable tanned. Swedish-made

WASH



SIZES

one size



Denimblå - 007 Svart - 015

ART NO 4085699

Waist apron

Side pockets with rivets. Loop for hanging. • 80 x 55 cm

MATERIAL

100% cotton, denim. Garment washed. 340-360g/m2

WASH



SIZES

one size



Ljusgrå - 011 Sand - 024 Orange - 033 Roströd - 038 Olivgrön - 086

ART NO 4576201

Waist apron

Double pocket in the middle, key holder. Loop for hanging.

• 100 x 50 cm

MATERIAL

65/35% polyester/cotton - Twill - 210g/m2

WASH



SIZES

one size



Vit - 000 Marin - 002 Grå - 014 Svart - 015 Brun - 028 Röd - 041

ART NO 4576280

Waist apron

Double pocket in the middle, key holder. Loop for hanging.

• 100 x 50 cm

MATERIAL

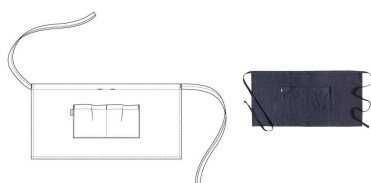
65/35% polyester/cotton - Twill - 245g/m2

WASH



SIZES

one size



Jeans - 076

ART NO 4576628

Waist apron

Double pocket in the middle, key holder. Loop for hanging.

• 100 x 50 cm

MATERIAL

100% cotton - Denim - 220g/m2, (7,5 oz)

WASH



SIZES

one size



Vit - 000 Marin - 002 Svart - 015

ART NO 5987280

Waist apron

Pocket on right side with bellows pleat, key holder. Loop for hanging. Polyester herringbone

• 75 x 85 cm

MATERIAL

65/35% polyester/cotton - Twill
- 245g/m2

WASH



SIZES

one size



SIZES AND MEASUREMENTS

The dimensions in the table below are **body measurements**. The dimensions are taken wearing underwear. Width for movement has already been added to each model and varies according to model.

WOMEN'S: C40 RANGE / S M L RANGE (Women's)

	XXS		XS		S		M		L		XL		XXL		3XL		4XL	
	C30	C32	C34	C36	C38	C40	C42	C44	C46	C48	C50	C52	C54	C56	C58	C60	C62	
Chest measurement	72	76	80	84	88	92	96	100	104	110	116	122	128	134	140	146	152	
Waist	56	60	64	68	72	76	80	84	88	94	100	106	112	118	124	130	136	
Hips	80	84	88	92	96	100	104	108	112	117	122	127	132	137	142	147	152	
Inseam, trousers*	75	75	76	77	78	78	79	79	79	80	80	80	81	81	81	81	81	

Segers' +range has an additional 8 cm at the hips in each size.

MEN'S: C50 RANGE/ S M L RANGE (Men's)

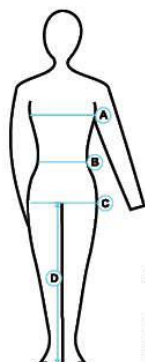
	XXS		XS		S		M		L		XL		XXL		3XL		4XL	
	C38	C40	C42	C44	C46	C48	C50	C52	C54	C56	C58	C60	C62	C64	C66	C68	C70	
Chest	76	80	84	88	92	96	100	104	108	112	116	120	126	132	138	144	150	
Waist	64	68	72	76	80	84	88	92	96	100	104	108	114	120	126	132	138	
Hips	83	87	91	95	99	103	107	111	115	119	123	127	133	139	145	151	157	
Collar size*	34	35-36		37-38		39-40		41-42		43-44		45-46		47-48		49-50		
Inseam, trousers*	76	76	76	77	78	79	80	81	82	83	83	84	84	85	85	85	85	

The C150 RANGE has an additional 6 cm for the inseam length of each size.

CONVERSION TABLE: UNISEX - MEN'S & WOMEN'S SIZES

Size Unisex	XXS	XS	S	M	L	XL	XXL	3XL	4XL
Corresponds to Men's (C-size)	C38	C40-42	C44-46	C48-50	C52-54	C56-58	C60-62	C64-66	C68-70
Corresponds to Men's (S M L)	XXS	XS	S	M	L	XL	XXL	3XL	4XL
Corresponds to Women's (C-size)	C32	C34-36	C38-40	C42-44	C46-48	C50	C52-54	C56-58	C60-62
Corresponds to Women's (S M L)	XS	XS/S	S/M	M/L	L/XL	XL	XXL	3XL	4XL

*Garment dimensions, not body measurements



- A = Chest measurement: taken over the highest point.
- B = Waist
- C = Hips: taken over the widest point.
- D = Inseam length, garment dimensions.

Start from the hip measurement when sizing trousers.
Start from bust/chest measurement when sizing tops.

CAPS:

Size	S	M	L	XL
Circumference*	54	57	60	63
Size	S/M		L/XL	
Circumference*	54-58		59-63	

SEGERS +

Garments with a more generous fit.

Segers has developed a line that we call +(plus). The aim is to provide clothing for those of us who have a more curvy figure. You choose your size based on your chest measurement - this +model of tunic is more A-line with more generous measurements over the hips. Remember that when you select sizes for your top and bottom, always use your chest and hip measurements respectively. These measurements do not always give the same garment size.



SEGERS FABRIKER AB
Företagsgatan 30, 504 64 Borås, SWEDEN
www.segers.com / info@segers.com / +46 33-23 10 00